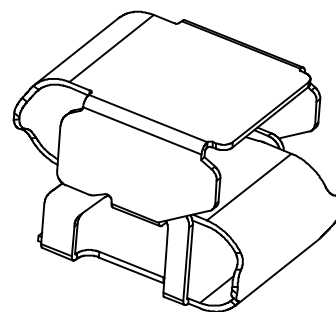
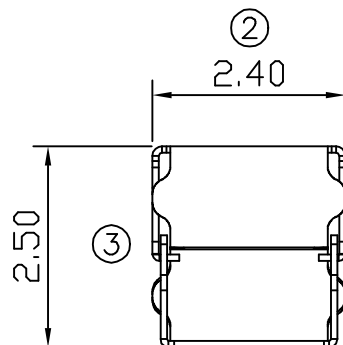
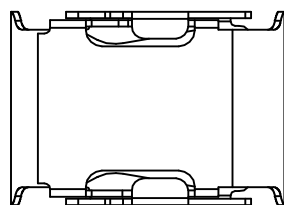
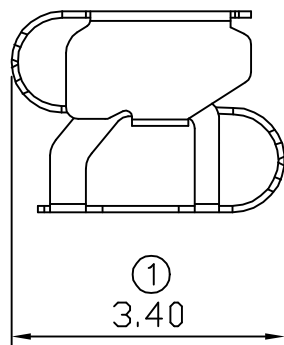
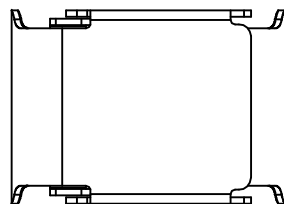
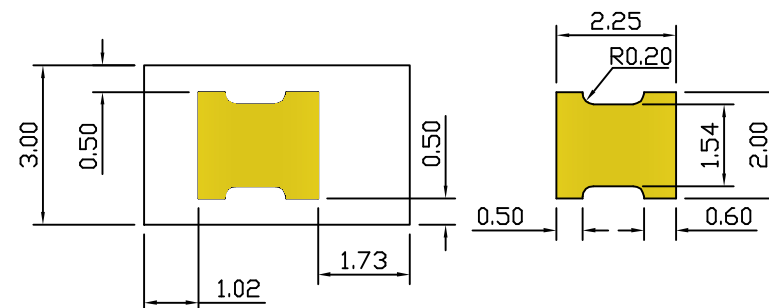


02 03/30-'15



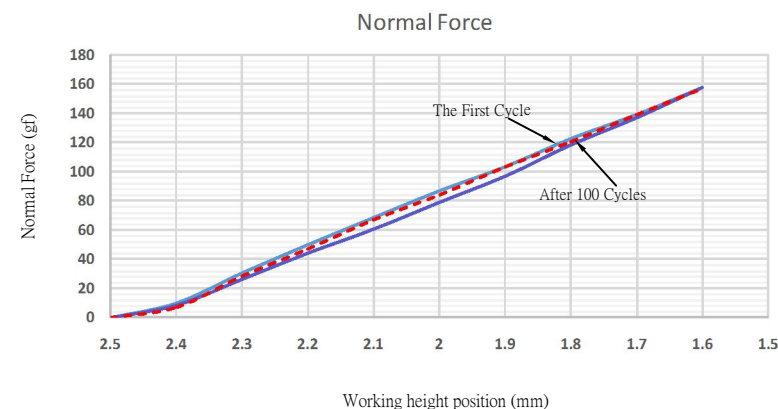
Note:

1. Material: Copper Alloy Thickness 0.08mm
2. Electroplate:
 - Au >1u" on contact area
 - Au >1u" on solder area
 - Nickel underplating over all
3. Electrical Characteristics:
 - 3-1 Current Voltage: 12V
 - 3-2 Current Rate: 3A
 - 3-3 Contact Resistance: Normal Compression < 30mΩ
4. Working Height of Application: 1.60~2.10mm
5. Spring Force Tolerance is ±20gf
6. Operating Temperature: -20℃~+85℃



RECOMMENDED SOLDERING PCB LAYOUT

TOLERANCE(.XX±0.05)



01	03/30-'15	Shape adjustment
00	03/22-'13	Design creation
REV	Date	Description
DRAFT	Robin Liao	03/22-'13
CHECKER	Gabby Weng	03/22-'13
APPROVAL	Jacky Lin	03/22-'13
RoHS Compatible		
EMI STOP CORP.		
EMISTOP PS-25A1Q1G		
CUS P/N		

TOLERANCE/CLASS			
RANGE(mm)	1	2	3
≤30	±0.10	0.15	0.20
30<~ ≤120	±0.15	0.20	0.30
120<~ ≤300	±0.20	0.30	0.50
300<	±0.30	0.50	0.80
ANGLES	±2.5°		