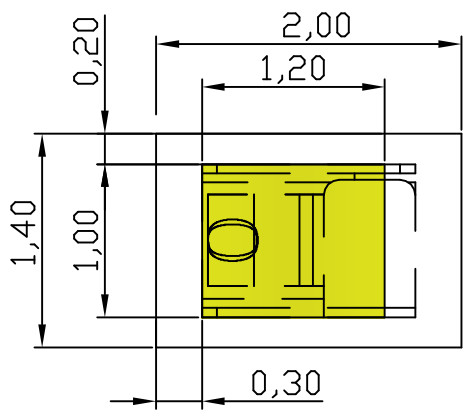
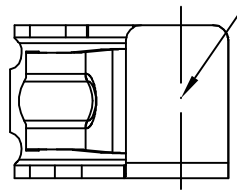


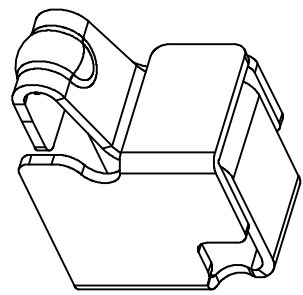
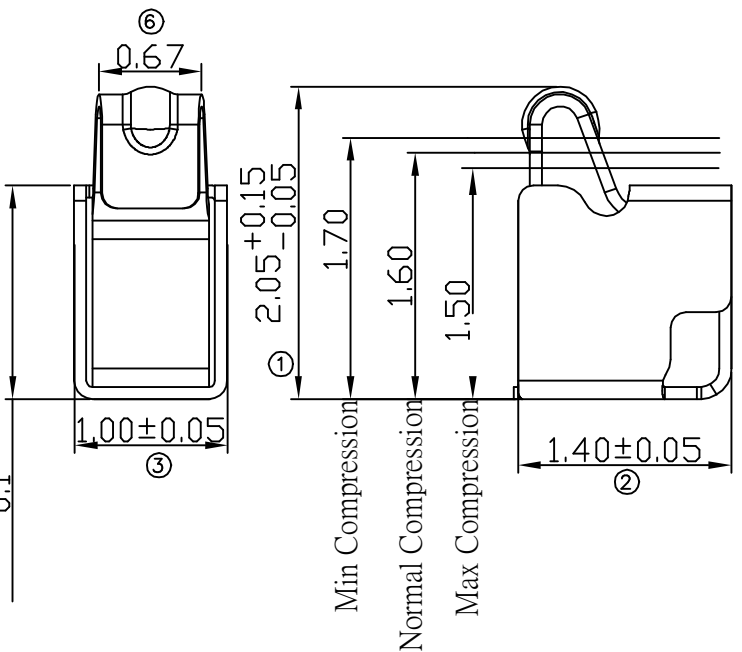
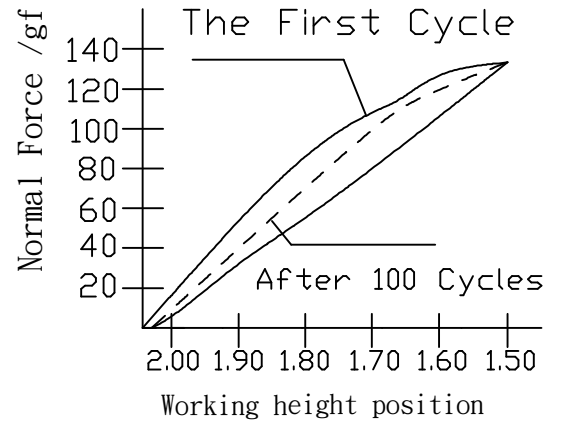


Place Area NOZZLE



RECOMMENDED SOLDERING PCB LAYOUT

TOLERANCE(.XX±0.05)



- Note:
1. Material: Stainless Steel Thickness 0.08mm
 2. Electroplate:
Au >1u' on contact area
Gold Flash on solder area
Nickel underplating over all
 3. Electrical Characteristics:
3-1 Current Voltage: 12V
3-2 Current Rate: 3A
3-3 Contact Resistance: Normal Compression < 50mΩ
 4. Working Height of Application: 1.70~1.50 mm
 5. Spring Force Tolerance is ±20gf
 6. Operating Temperature: -20℃~+85℃

TOLERANCE/CLASS			
RANGE(mm)	1	2	3
≤30	+ 0.1	+ 0.15	+ 0.2
30< - ≤120	+ 0.15	+ 0.2	+ 0.3
120< - ≤300	+ 0.2	+ 0.3	+ 0.5
300<	+ 0.3	+ 0.5	+ 0.8
ANGLES	+ 2.5°		

00	07/01-'20	Design creation								
REV	Date	Description								
DRAFT	Hardy Hsieh	DATE	07/01-'20	RoHS Compatible						
CHECKER	Justin Wu	DATE	07/01-'20							
APPROVAL	Timothy Chen	DATE	07/01-'20			SHEET	1-2	SCALE	Not to scale	UNIT
EMI STOP CORP.		EMI STOP								
EMISTOP		SQT-20Q1G								
CUS P/N										