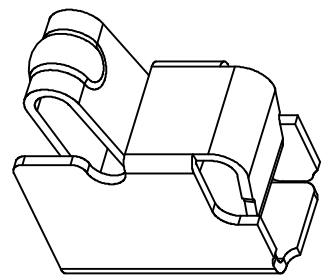
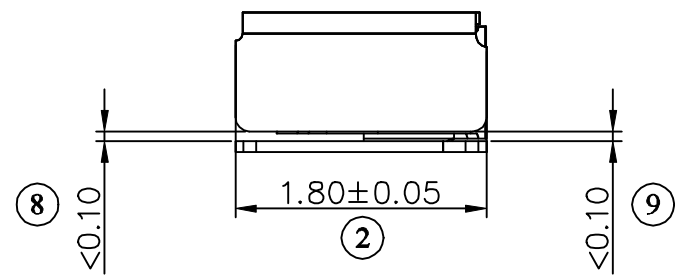
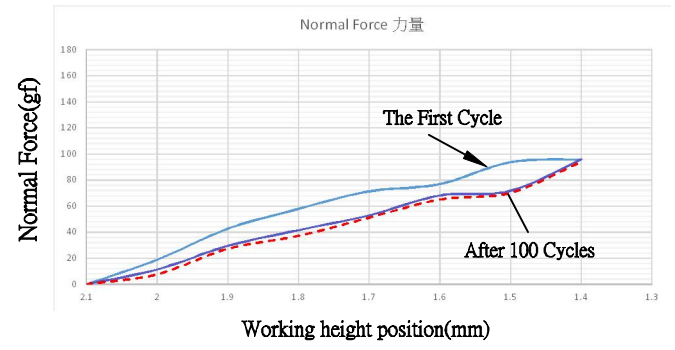
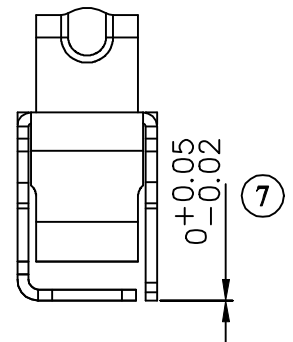
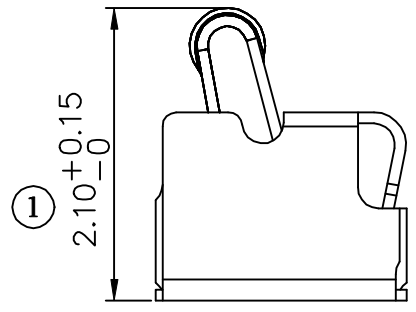
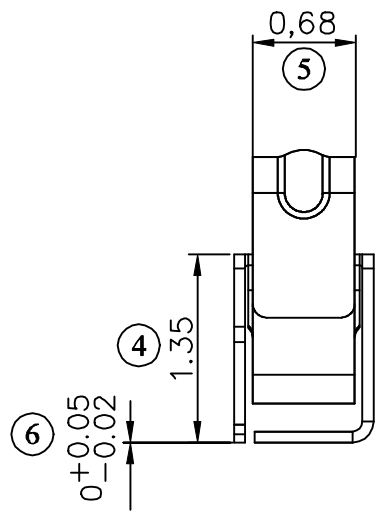


RECOMMENDED SOLDERING PCB LAYOUT



Note:

1. Material: Stainless Steel Thickness 0.08 mm
2. Electroplate: Au >1u" gold plating on contact area Nickel underplating over all
3. Electrical Characteristics:
  - a. Current Voltage: 12V
  - b. Current Rate: 3A
  - c. Contact Resistance; Normal Compression <math>\le 50m\Omega</math>
4. Working Height of Application: 1.80~1.35 mm
5. Spring Force Tolerance is  $\pm 20gf$
6. Operating Temperature:  $-20^{\circ}C \sim +85^{\circ}C$

01	2022-01-19	Revised dimensional control			
DRAFT	Hardy Hsieh	DATE	2022-01-19	<h1>RoHS Compatible</h1>	
CHECKER	Justin Wu	DATE	2022-01-19		
APPROVAL	Timothy Chen	DATE	2022-01-19		
		SHEET	1-2	SCALE	Not to scale
		UNIT	mm		

TOLERANCE/CLASS			
RANGE(mm)	A	B	C
$\le 30$	$\pm 0.10$	0.15	0.20
$30 < \sim \le 120$	$\pm 0.15$	0.20	0.30
$120 < \sim \le 300$	$\pm 0.20$	0.30	0.50
$300 <$	$\pm 0.30$	0.50	0.80
ANGLES	$\pm 2.5'$		

## EMI STOP CORP.

EMISTOP P/N	CUS P/N
SQT-21Q1G	