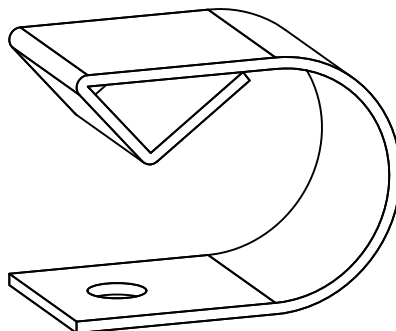
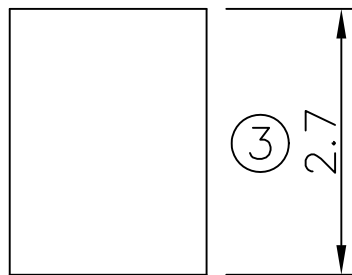
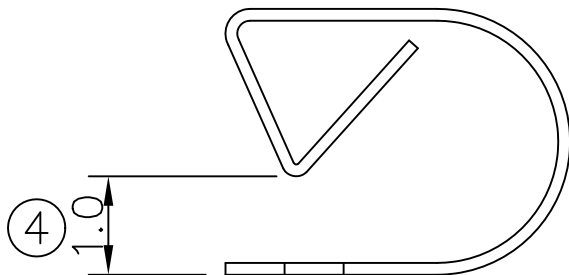


RECOMMENDED SOLDERING PCB LAYOUT

TOLERANCE(.XX±0.05)



Note:

1. Material: BeCu Thickness 0.12mm
2. Electroplate:
Matte Sn over all
Nickel underplating over all
3. Operating Temperature: -20℃~+85℃
4. Recommended conditions ϕ 1.2~2.0mm

TOLERANCE/CLASS			
RANGE(mm)	1	2	3
≤30	±0.10	0.15	0.20
30< ≤120	±0.15	0.20	0.30
120< ≤300	±0.20	0.30	0.50
300<	±0.30	0.50	0.80
ANGLES	±2.5°		

00	03/23-'04	Design creation			
REV	Date	Description			
DRAFT	DATE	RoHS Compatible			
Jewel Liu	03/23-'04				
CHECKER	DATE				
Avis Chien	03/23-'04				
APPROVAL	DATE	SHEET	SCALE	UNIT	
Gary Chen	03/23-'04	1-2	Not to scale	mm	

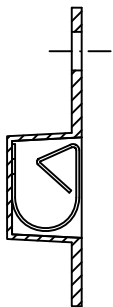


EMI STOP

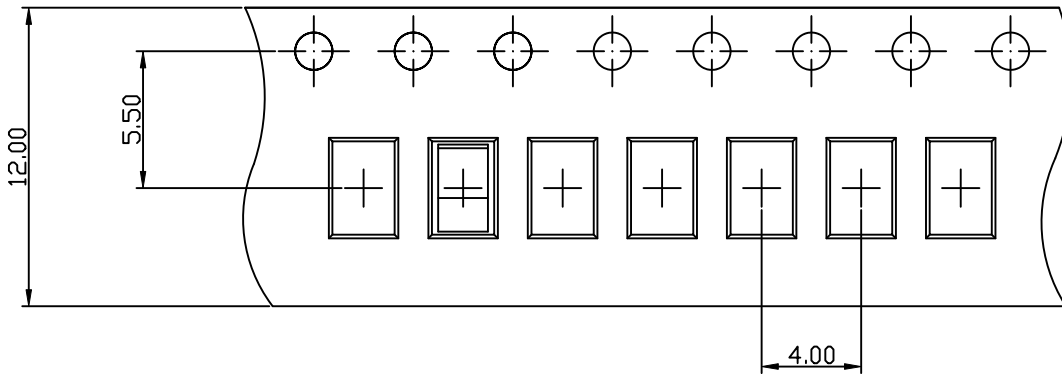
EMI STOP CORP.

EMISTOP
SU-27AS

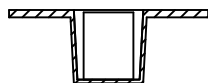
CUS P/N



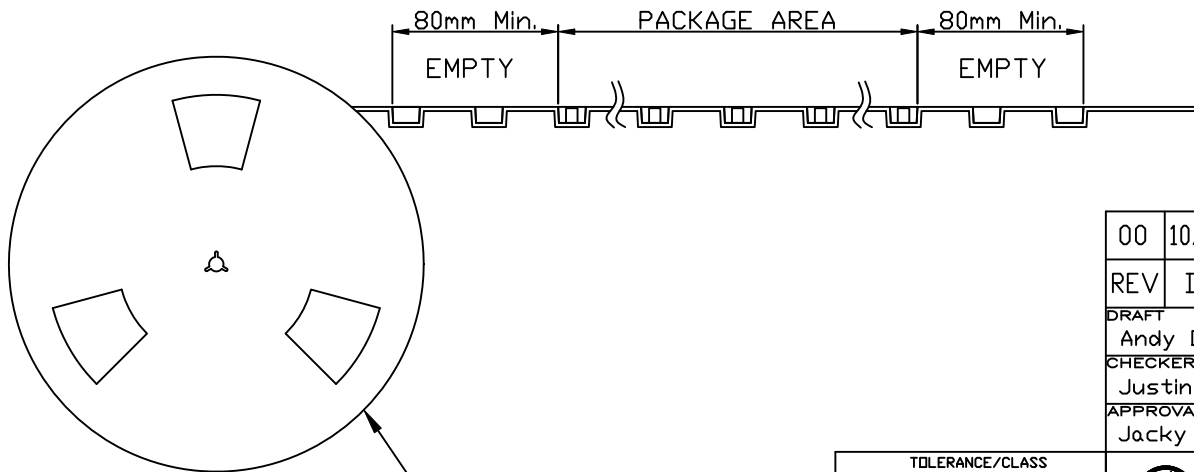
Side View



FEEDING DIRECTION



Front View



REEL(13")

Package Information:
 1.Quantity Per Reel: 5000PCS
 2.REEL: 13"X 12 mm

00	10/15-'19	Design creation		
REV	Date	Description		
DRAFT	DATE	RoHS Compatible		
Andy □	10/15-'19			
CHECKER	DATE			
Justin Wu	10/15-'19			
APPROVAL	DATE	SHEET	SCALE	UNIT
Jacky Lin	10/15-'19	2-2	Not to scale	mm

TOLERANCE/CLASS			
RANGE(mm)	1	2	3
≤30	±0.10	0.15	0.20
30<- ≤120	±0.15	0.20	0.30
120<- ≤300	±0.20	0.30	0.50
300<	±0.30	0.50	0.80
ANGLES	±2.5°		



EMI STOP CORP.

EMISTOP
SU-27AS

CUS P/N