

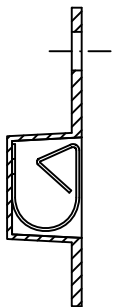
RECOMMENDED SOLDERING PCB LAYOUT
TOLERANCE(.XX±0.05)

- Note:
1. Material: BeCu Thickness 0.12mm
 2. Electroplate:
Matte Sn over all
Nickel underplating over all
 3. Operating Temperature: -20℃~+85℃
 4. Recommended conditions $\phi 2.05\text{mm}$

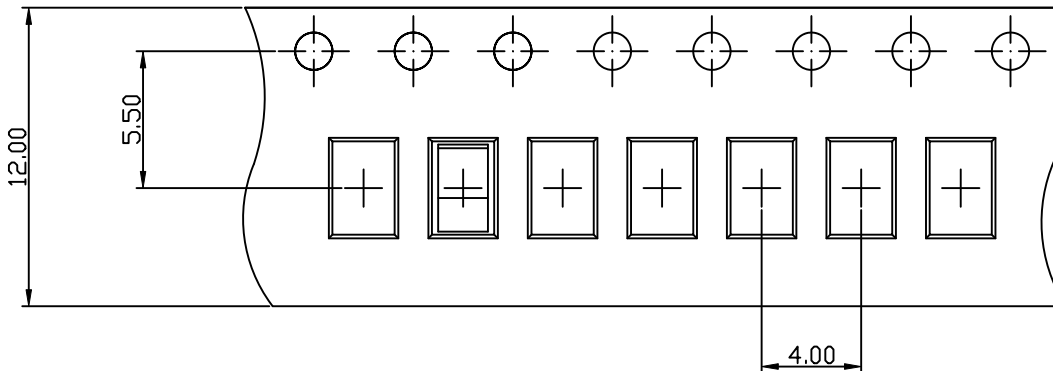
TOLERANCE/CLASS			
RANGE(mm)	1	2	3
≤30	±0.10	0.15	0.20
30< ≤120	±0.15	0.20	0.30
120< ≤300	±0.20	0.30	0.50
300<	±0.30	0.50	0.80
ANGLES	±2.5°		

00	06/23-'08	Design creation
REV	Date	Description
DRAFT	DATE	RoHS Compatible
Timmy Lai	06/23-'08	
CHECKER	DATE	
Benedict Liang	06/23-'08	
APPROVAL	DATE	SHEET
Jacky Lin	06/23-'08	1-2
		SCALE
		Not to scale
		UNIT
		mm

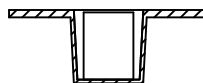
EMI STOP CORP.
EMI STOP
EMISTOP SU-27A1M CUS P/N



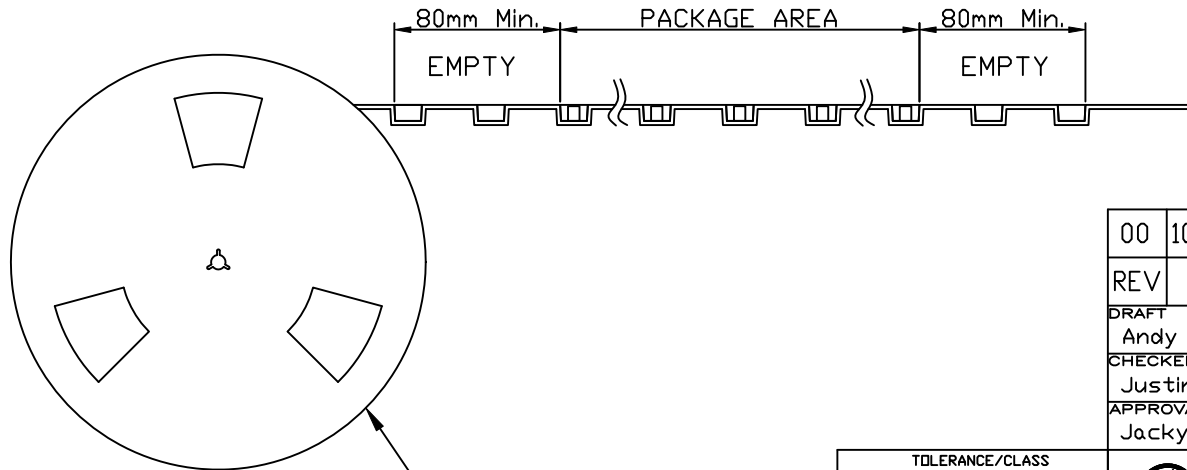
Side View



FEEDING DIRECTION



Front View



REEL(13")

Package Information:
 1.Quantity Per Reel: 5000PCS
 2.REEL: 13"X 12 mm

00	10/15-'19	Design creation		
REV	Date	Description		
DRAFT	Andy □	DATE	10/15-'19	RoHS Compatible
CHECKER	Justin Wu	DATE	10/15-'19	
APPROVAL	Jacky Lin	DATE	10/15-'19	SHEET 2-2
		SCALE	Not to scale	UNIT mm

TOLERANCE/CLASS			
RANGE(mm)	1	2	3
≤30	±0.10	0.15	0.20
30<- ≤120	±0.15	0.20	0.30
120<- ≤300	±0.20	0.30	0.50
300<	±0.30	0.50	0.80
ANGLES	±2.5°		



EMI STOP

EMI STOP CORP.

EMISTOP
SU-27A1M

CUS P/N