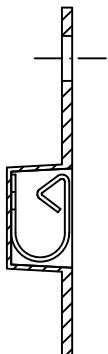


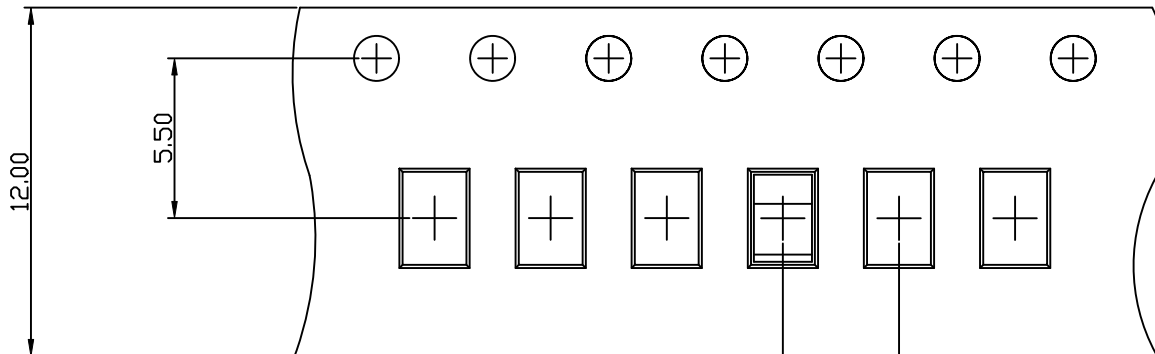
- Note:
1. Material: BeCu Thickness 0.15mm
 2. Electroplate:
Matte Sn over all
Nickel underplating over all
 3. Operating Temperature: -20℃~+85℃
 4. Recommended conditions $\phi 1.02 \sim 1.27 \text{mm}$

TOLERANCE/CLASS			
RANGE(mm)	1	2	3
≤30	±0.10	0.15	0.20
30< ≤120	±0.15	0.20	0.30
120< ≤300	±0.20	0.30	0.50
300<	±0.30	0.50	0.80
ANGLES	±2.5°		

00	04/07-'04	Design creation			
REV	Date	Description			
DRAFT	DATE	RoHS Compatible			
Jewel Liu	04/07-'04				
CHECKER	DATE				
Avis Chien	04/07-'04				
APPROVAL	DATE	SHEET	SCALE	UNIT	
Gary Chen	04/07-'04	1-2	Not to scale	mm	
		EMI STOP CORP.			
EMISTOP		CUS P/N			
SU-20S					



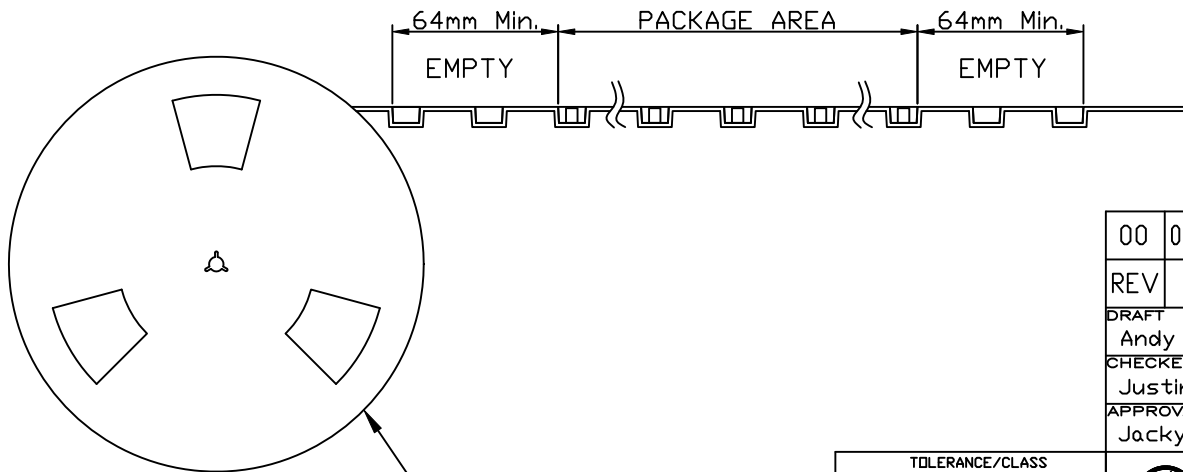
Side View



FEEDING DIRECTION



Front View



REEL(13")

Package Information:
 1.Quantity Per Reel: 7000PCS
 2.REEL: 13"X 12 mm

00	07/01-'19	Design creation		
REV	Date	Description		
DRAFT	DATE	RoHS Compatible		
Andy □	07/01-'19			
CHECKER	DATE			
Justin Wu	07/01-'19			
APPROVAL	DATE	SHEET	SCALE	UNIT
Jacky Lin	07/01-'19	2-2	Not to scale	mm

TOLERANCE/CLASS			
RANGE(mm)	1	2	3
≤30	±0.10	0.15	0.20
30<- ≤120	±0.15	0.20	0.30
120<- ≤300	±0.20	0.30	0.50
300<	±0.30	0.50	0.80
ANGLES	±2.5°		

EMI STOP CORP.

EMI STOP

EMISTOP SU-20S

CUS P/N