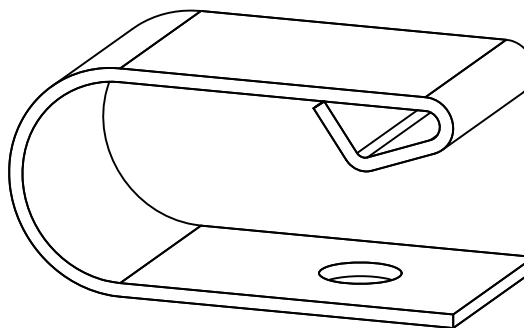
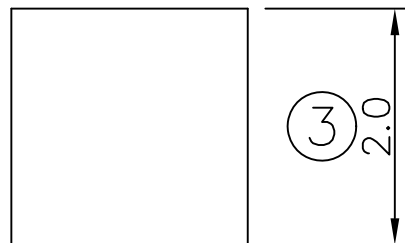
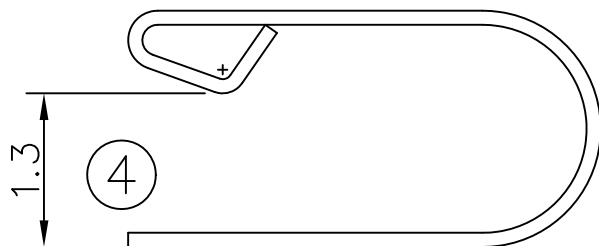


RECOMMENDED SOLDERING PCB LAYOUT

TOLERANCE(.XX±0.05)

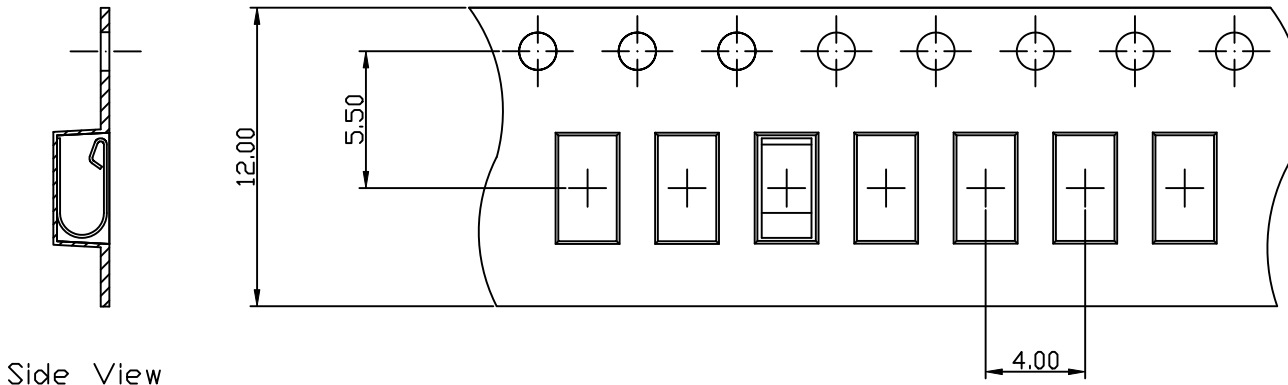


Note:

- 1. Material: BeCu Thickness 0.12mm
- 2. Electroplate:
Matte Sn over all
Nickel underplating over all
- 3. Operating Temperature: -20℃~+85℃
- 4. Recommended conditions $\phi 1.44\text{mm}$

TOLERANCE/CLASS			
RANGE(mm)	1	2	3
≤30	±0.10	0.15	0.20
30< ≤120	±0.15	0.20	0.30
120< ≤300	±0.20	0.30	0.50
300<	±0.30	0.50	0.80
ANGLES	±2.5°		

00	06/24-'04	Design creation			
REV	Date	Description			
DRAFT	DATE	RoHS Compatible			
Jewel Liu	06/24-'04				
CHECKER	DATE				
Jacky Lin	06/24-'04				
APPROVAL	DATE	SHEET	SCALE	UNIT	
Gary Chen	06/24-'04	1-2	Not to scale	mm	
		EMI STOP CORP.			
EMISTOP		SU-20AS		CUS P/N	

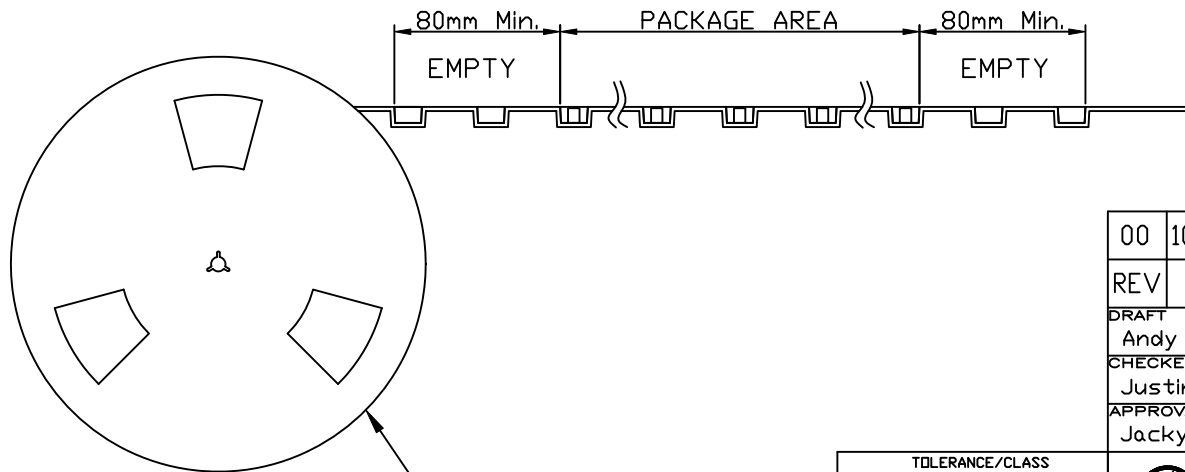


Side View

FEEDING DIRECTION



Front View



REEL(7")

Package Information:
 1.Quantity Per Reel: 2000PCS
 2.REEL: 7"X 12 mm

00	10/15-'19	Design creation		
REV	Date	Description		
DRAFT	DATE	RoHS Compatible		
Andy □	10/15-'19			
CHECKER	DATE			
Justin Wu	10/15-'19			
APPROVAL	DATE	SHEET	SCALE	UNIT
Jacky Lin	10/15-'19	2-2	Not to scale	mm

TOLERANCE/CLASS			
RANGE(mm)	1	2	3
≤30	±0.10	0.15	0.20
30<- ≤120	±0.15	0.20	0.30
120<- ≤300	±0.20	0.30	0.50
300<	±0.30	0.50	0.80
ANGLES	±2.5°		



EMI STOP

EMI STOP CORP.

EMISTOP
SU-20AS

CUS P/N