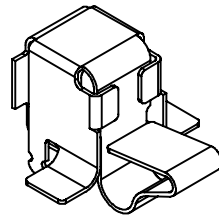
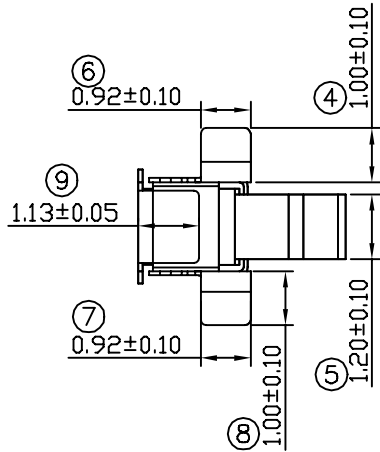
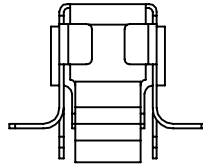
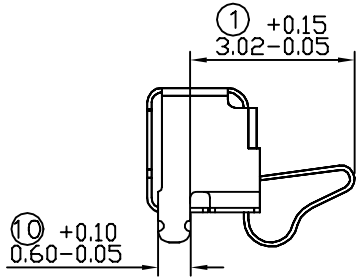
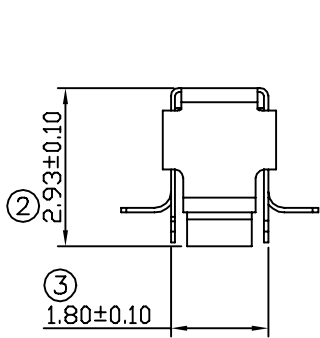
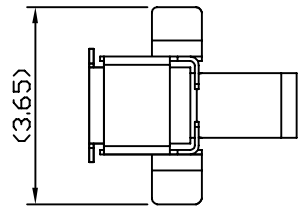
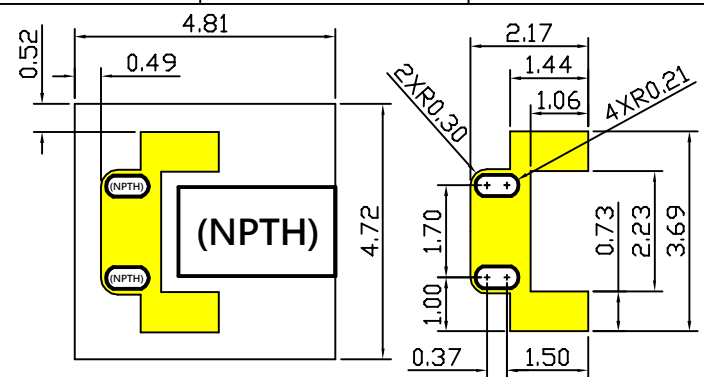


02 11/18-'15 變更細處為  $\triangle$  符號



- Note:
- Material: Copper Alloy Thickness 0.08mm
  - Electroplate:
    - Gold Flash on contact area
    - Gold Flash on solder area
    - Nickel underplating over all
  - Electrical Characteristics:
    - 3-1 Current Voltage: 12V
    - 3-2 Current Rate: 3A
    - 3-3 Contact Resistance: Normal Compression <math><30\text{m}\Omega</math>
  - Working Range of Application: 0.50~0.80 mm
  - Spring Force Tolerance is  $\pm 20\text{gf}$
  - Operating Temperature:  $-20^{\circ}\text{C}\sim+85^{\circ}\text{C}$



RECOMMENDED SOLDERING PCB LAYOUT

TOLERANCE(.XX±0.05)

00	04/24-'15	Design creation	
REV	Date	Description	
DRAFT	DATE	<b>RoHS Compatible</b>	
Hardy Hsieh	04/24-'15		
CHECKER	DATE		
Justin Wu	04/24-'15		
APPROVAL	DATE	SHEET	SCALE
Jacky Lin	04/24-'15	1-2	Not to scale
		UNIT	
		mm	

TOLERANCE/CLASS			
RANGE(mm)	1	2	3
≤30	±0.10	0.15	0.20
30< - ≤120	±0.15	0.20	0.30
120< - ≤300	±0.20	0.30	0.50
300<	±0.30	0.50	0.80
ANGLES	±2.5°		

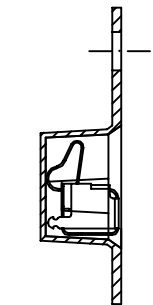


**EMI STOP CORP.**

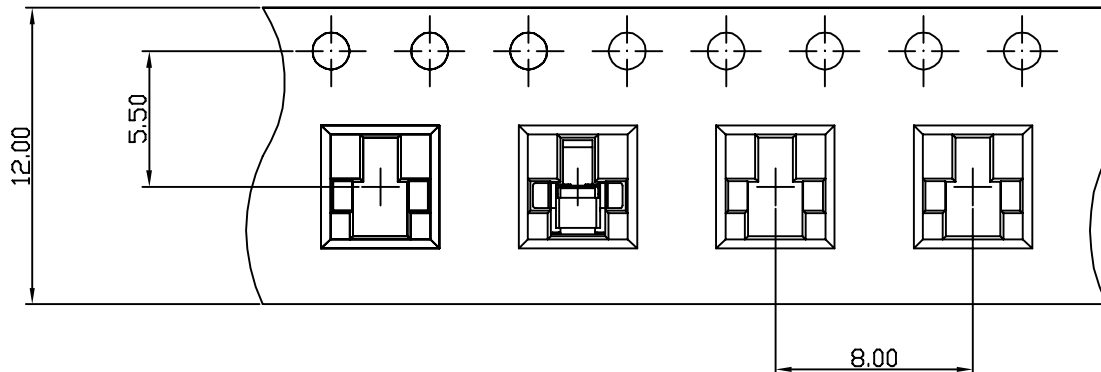
EMI STOP

EMISTOP  
JC-423037Q1G

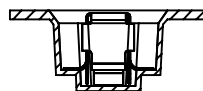
CUS P/N



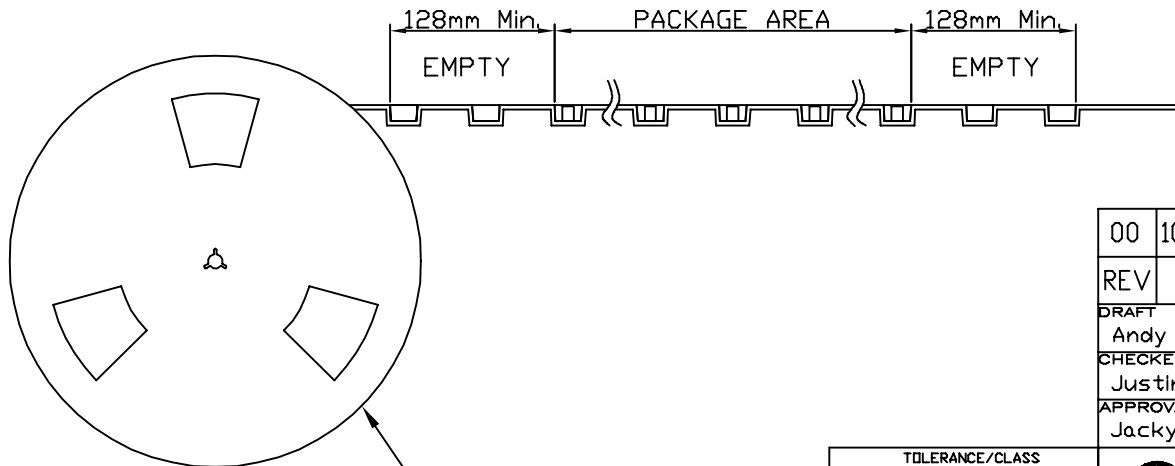
Side View



FEEDING DIRECTION



Front View



Package Information:  
 1.Quantity Per Reel: 2500PCS  
 2.REEL: 13"X 12 mm

00	10/24-'19	Design creation				
REV	Date	Description				
DRAFT Andy □		DATE 10/24-'19	<b>RoHS Compatible</b>			
CHECKER Justin Wu		DATE 10/24-'19				
APPROVAL Jacky Lin		DATE 10/24-'19	SHEET 2-2	SCALE Not to scale	UNIT mm	

TOLERANCE/CLASS			
RANGE(mm)	1	2	3
≤30	±0.10	0.15	0.20
30< - ≤120	±0.15	0.20	0.30
120< - ≤300	±0.20	0.30	0.50
300<	±0.30	0.50	0.80
ANGLES	±2.5°		

**EMI STOP CORP.**  
 EMI STOP  
 EMISTOP JC-423037Q1G CUS P/N