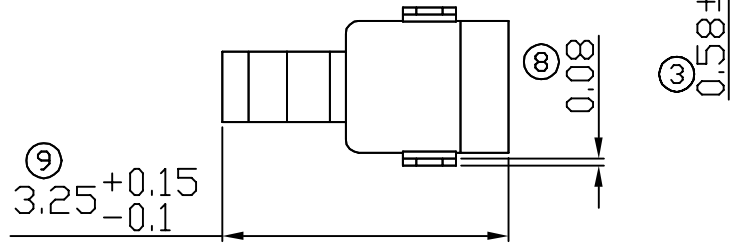
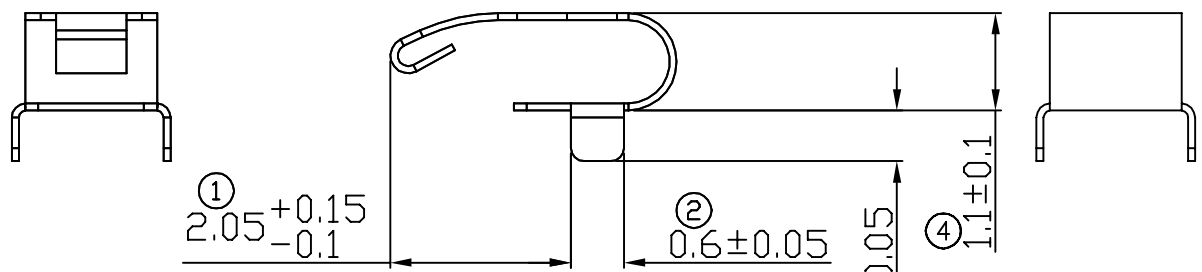
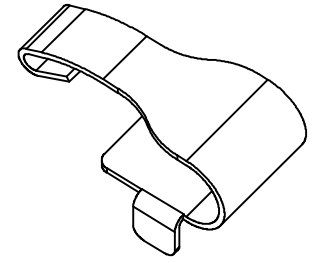


RECOMMENDED SOLDERING PCB LAYOUT  
TOLERANCE(.XX±0.05)



Note:  
1. Material: Copper Alloy Thickness 0.08mm  
2. Electroplate:  
Au >1u" on contact area  
Au >1u" on solder area  
Nickel underplating over all  
3.Electrical Characteristics:  
3-1 Current Voltage: 12V  
3-2 Current Rate: 3A  
3-3 Contact Resistance: Normal Compression<30mΩ  
4.Working Range of Application: 0.30~0.50 mm  
5.Spring Force Tolerance is ±20gf  
6.Operating Temperature: -20℃~+85℃

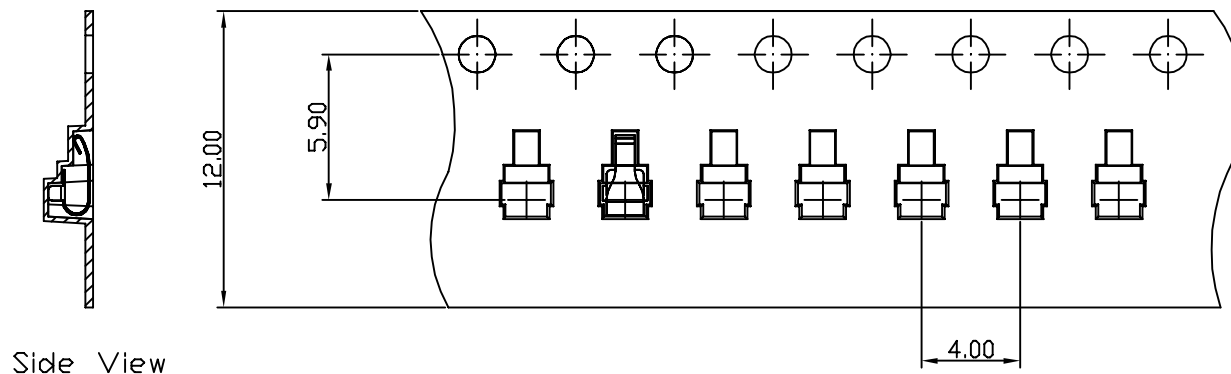


00	03/24-'16	Design creation	
REV	Date	Description	
DRAFT Danny Liao	DATE 03/24-'16	<b>RoHS Compatible</b>	
CHECKER Justin Wu	DATE 03/24-'16		
APPROVAL Jacky Lin	DATE 03/24-'16	SHEET 1-2	SCALE Not to scale
		UNIT mm	

TOLERANCE/CLASS			
RANGE(mm)	1	2	3
≤30	±0.10	0.15	0.20
30< - ≤120	±0.15	0.20	0.30
120< - ≤300	±0.20	0.30	0.50
300<	±0.30	0.50	0.80
ANGLES	±2.5°		

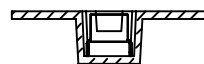
**EMI STOP CORP.**  
EMI STOP  
EMISTOP JC-333311G CUS P/N

00 10/24-'19

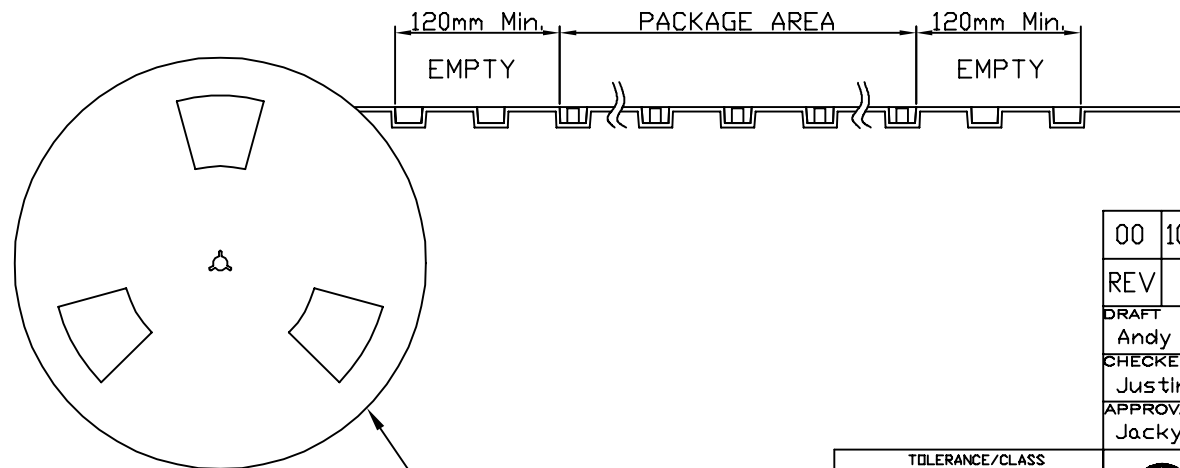


Side View

FEEDING DIRECTION



Front View



Package Information:  
 1.Quantity Per Reel: 8100PCS  
 2.REEL: 13"X 12 mm

00	10/24-'19	Design creation		
REV	Date	Description		
DRAFT Andy □		DATE 10/24-'19	<b>RoHS Compatible</b>	
CHECKER Justin Wu		DATE 10/24-'19		
APPROVAL Jacky Lin		DATE 10/24-'19	SHEET 2-2	SCALE Not to scale
		UNIT mm		

TOLERANCE/CLASS			
RANGE(mm)	1	2	3
≤30	±0.10	0.15	0.20
30<- ≤120	±0.15	0.20	0.30
120<- ≤300	±0.20	0.30	0.50
300<	±0.30	0.50	0.80
ANGLES	±2.5°		

**EMI STOP CORP.**  
 EMI STOP  
 EMISTOP JC-333311G

CUS P/N