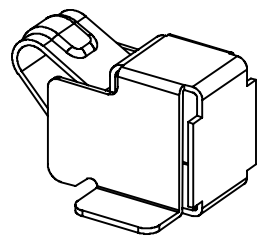


RECOMMENDED SOLDERING PCB LAYOUT
 TOLERANCE(.XX±0.05)

- Note:
- Material: Copper Alloy Thickness 0.08mm
 - Electroplate:
 Au >1U" on contact area
 Au >1u" on solder area
 Nickel underplating over all
 - Electrical Characteristics:
 3-1 Current Voltage: 12V
 3-2 Current Rate: 3A
 3-3 Contact Resistance: Normal Compression < 30mΩ
 - Working Range of Application: 0.30~0.50 mm
 - Spring Force Tolerance is ±20gf
 - Operating Temperature: -20°C~+85°C

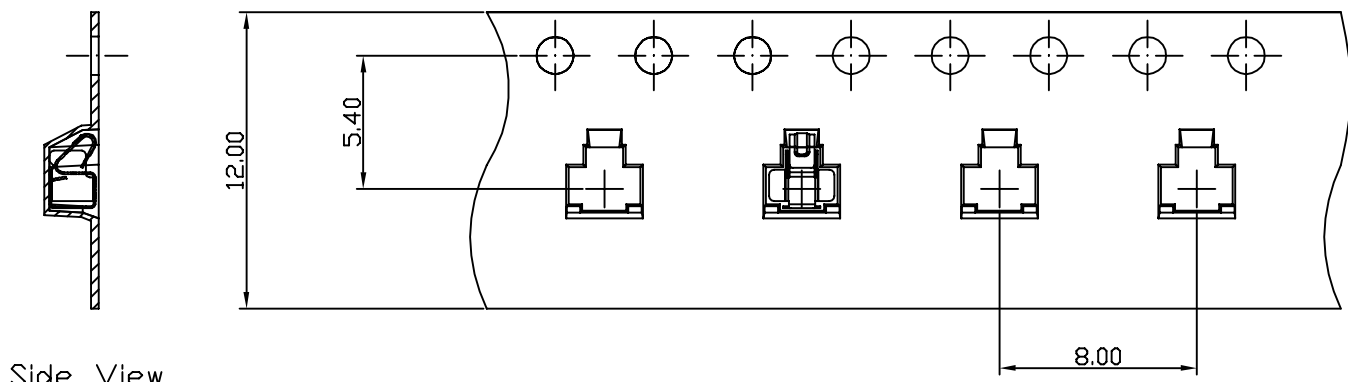


00	05/26-'16	Design creation	
REV	Date	Description	
DRAFT Danny Liao		DATE 05/26-'16	RoHS Compatible
CHECKER Justin Wu		DATE 05/26-'16	
APPROVAL Jacky Lin		DATE 05/26-'16	SHEET 1-2 SCALE Not to scale UNIT mm

TOLERANCE/CLASS			
RANGE(mm)	1	2	3
≤30	±0.10	0.15	0.20
30< - ≤120	±0.15	0.20	0.30
120< - ≤300	±0.20	0.30	0.50
300<	±0.30	0.50	0.80
ANGLES	±2.5°		

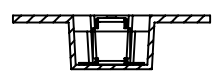
EMI STOP CORP.
 EMI STOP

EMISTOP JC-302619G CUS P/N

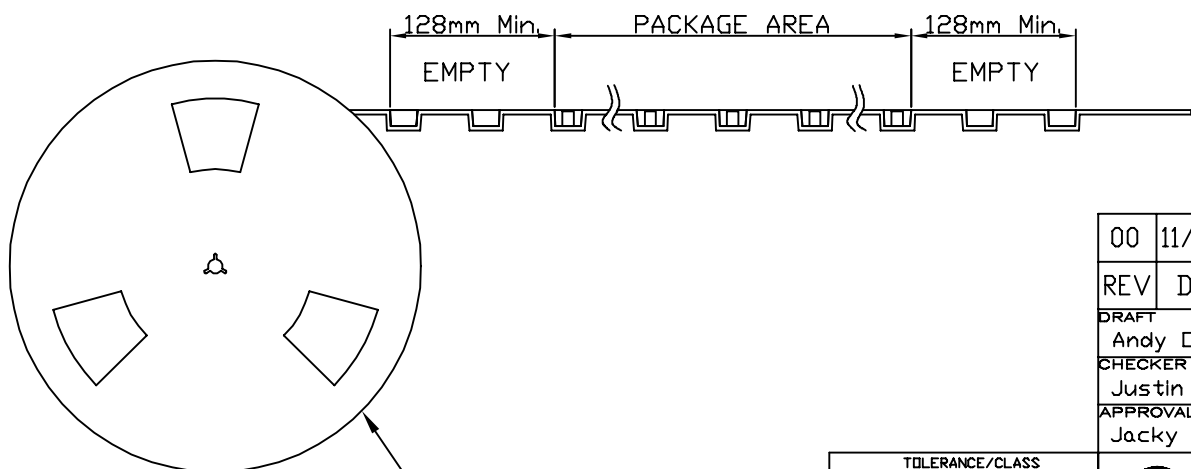


Side View

FEEDING DIRECTION



Front View



REEL(13")

Package Information:
 1.Quantity Per Reel: 3700PCS
 2.REEL: 13"X 12 mm

00	11/05-'19	Design creation	
REV	Date	Description	
DRAFT	Andy □	DATE	11/05-'19
CHECKER	Justin Wu	DATE	11/05-'19
APPROVAL	Jacky Lin	DATE	11/05-'19
		SHEET	2-2
		SCALE	Not to scale
		UNIT	mm
			⊕

RoHS
Compatible

TOLERANCE/CLASS			
RANGE(mm)	1	2	3
≤30	±0.10	0.15	0.20
30<- ≤120	±0.15	0.20	0.30
120<- ≤300	±0.20	0.30	0.50
300<	±0.30	0.50	0.80
ANGLES	±2.5°		



EMI STOP CORP.

EMISTOP
JC-302619G

CUS P/N