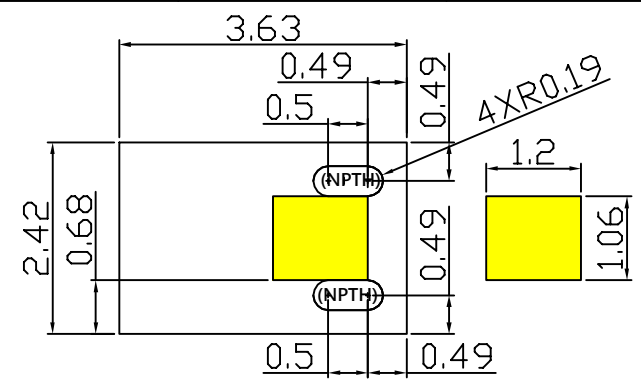
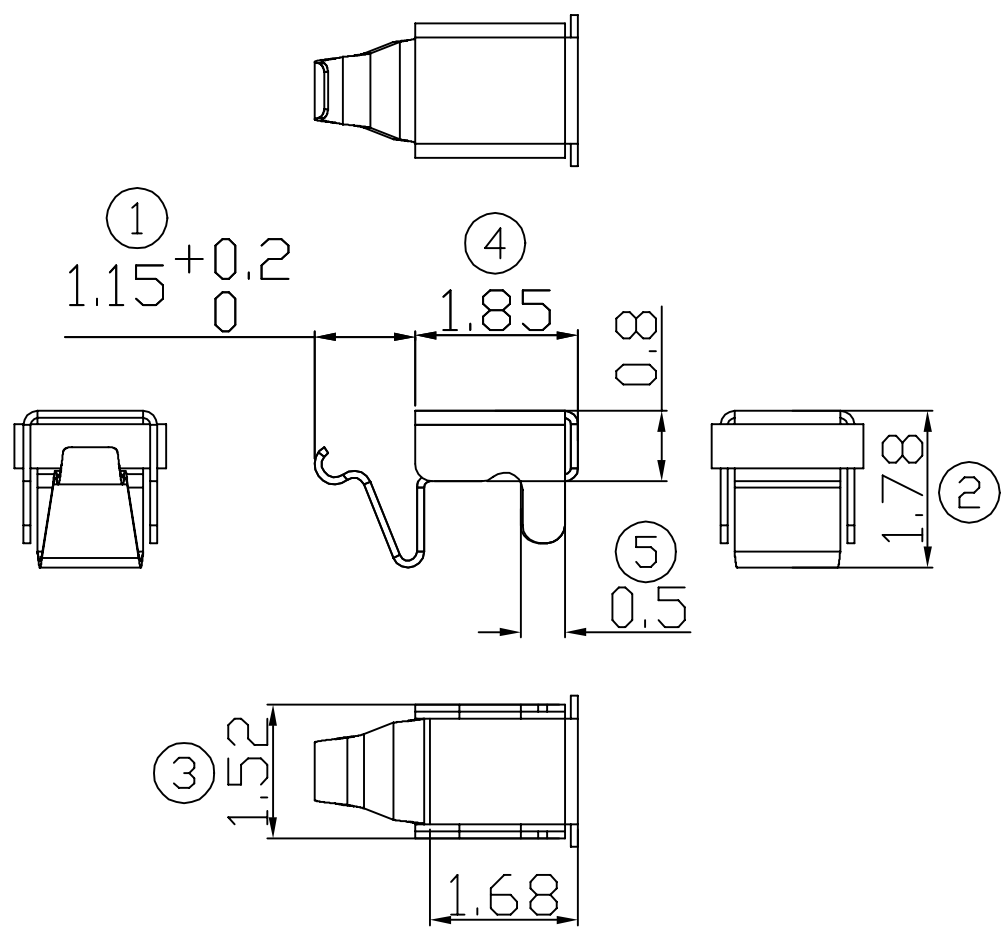


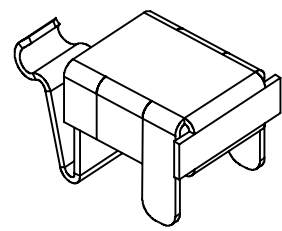
00 10/30-'15



RECOMMENDED SOLDERING PCB LAYOUT

TOLERANCE(.XX±0.05)

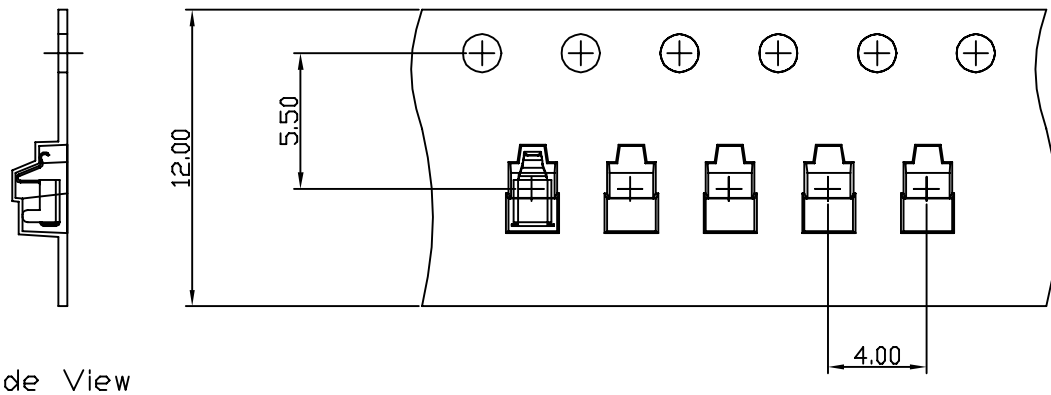
- Note:
- Material: Copper Alloy Thickness 0.08mm
 - Electroplate:
 - Gold Flash on contact area
 - Gold Flash on solder area
 - Nickel underplating over all
 - Electrical Characteristics:
 - 3-1 Current Voltage: 12V
 - 3-2 Current Rate: 3A
 - 3-3 Contact Resistance: Normal Compression < 30mΩ
 - Working Range of Application: 0.30~0.50 mm
 - Spring Force Tolerance is ±20gf
 - Operating Temperature: -20°C~+85°C



00	10/30-'15	Design creation				
REV	Date	Description				
DRAFT		DATE	RoHS Compatible			
Hardy Hsieh		10/30-'15				
CHECKER		DATE				
Justin Wu		10/30-'15				
APPROVAL		DATE	SHEET	SCALE	UNIT	
Jacky Lin		10/30-'15	1-2	Not to scale	mm	

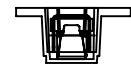
TOLERANCE/CLASS			
RANGE(mm)	1	2	3
≤30	±0.10	0.15	0.20
30<- ≤120	±0.15	0.20	0.30
120<- ≤300	±0.20	0.30	0.50
300<	±0.30	0.50	0.80
ANGLES	±2.5°		

EMI STOP CORP.
 EMI STOP
 EMISTOP JC-301518Q1G CUS P/N

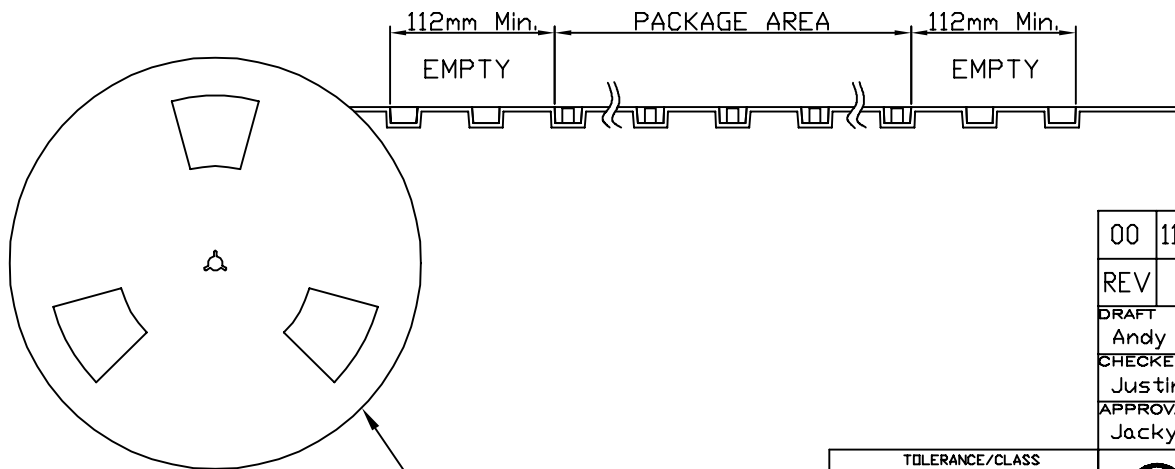


Side View

FEEDING DIRECTION



Front View



Package Information:
 1.Quantity Per Reel: 7000PCS
 2.REEL: 13"X 12 mm

00	11/05-'19	Design creation	
REV	Date	Description	
DRAFT	Andy □	DATE	11/05-'19
CHECKER	Justin Wu	DATE	11/05-'19
APPROVAL	Jacky Lin	DATE	11/05-'19
		SHEET	2-2
		SCALE	Not to scale
		UNIT	mm

RoHS
Compatible

TOLERANCE/CLASS			
RANGE(mm)	1	2	3
≤30	±0.10	0.15	0.20
30< - ≤120	±0.15	0.20	0.30
120< - ≤300	±0.20	0.30	0.50
300<	±0.30	0.50	0.80
ANGLES	±2.5°		

EMI STOP CORP.
 EMI STOP
 EMISTOP JC-301518Q1G CUS P/N