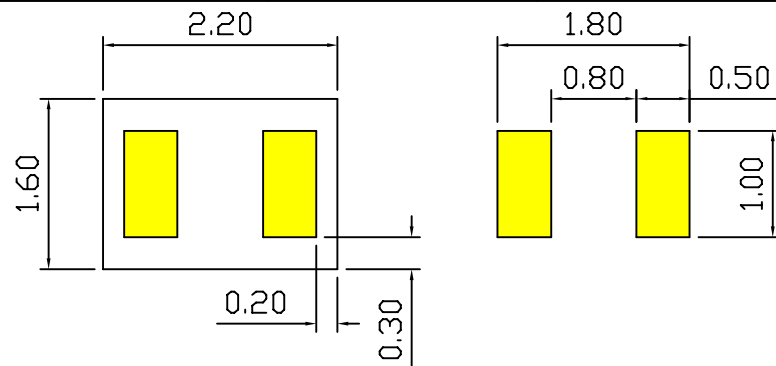
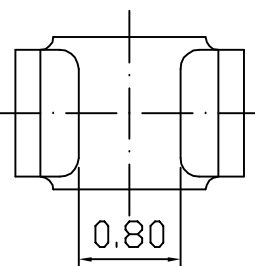
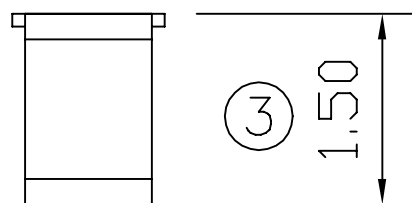
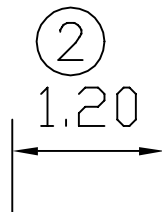
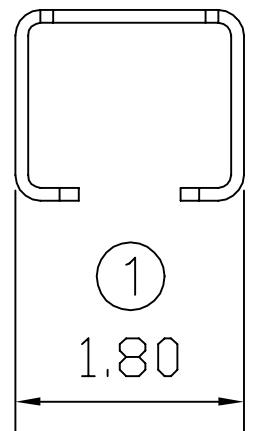


0309-03

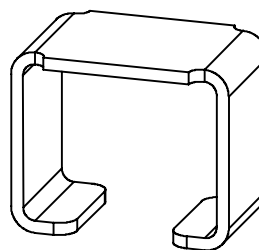


RECOMMENDED SOLDERING PCB LAYOUT

TOLERANCE(.XX±0.05)

Note:

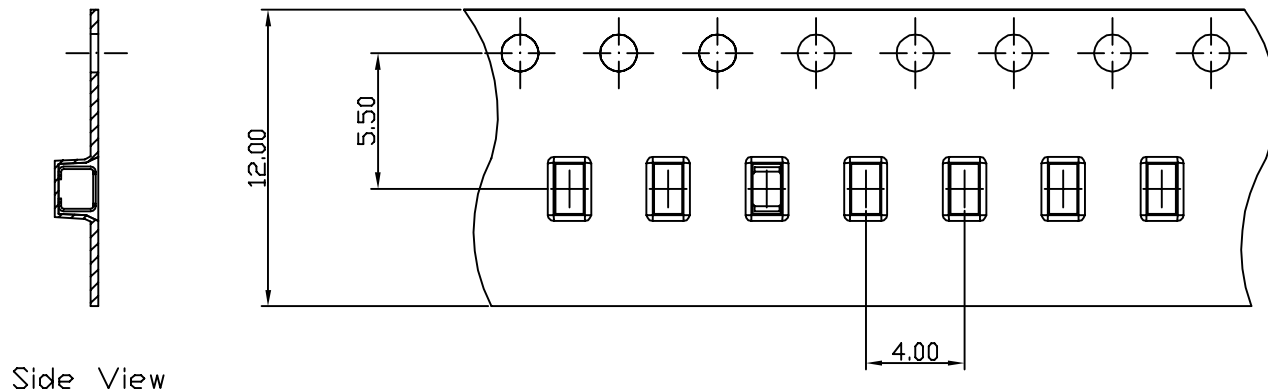
1. Material: Phosphorus bronze Thickness 0.10mm
2. Electroplate:
 - Au>1u" on contact area
 - Au>1u" on solder area
 - Nickel underplating over all
3. Electrical Characteristics:
 - 3-1 Current Voltage: 12V
 - 3-2 Current Rate: 3A
 - 3-3 Contact Resistance: Normal Compression<30mΩ
4. Operating Temperature: -20℃~+85℃



00	12/03-'09	Design creation	
REV	Date	Description	
DRAFT	Justin Wu	DATE	12/03-'09
CHECKER	Benedict Liang	DATE	12/03-'09
APPROVAL	Jacky Lin	DATE	12/03-'09
		SHEET	1-2
		SCALE	Not to scale
		UNIT	mm

TOLERANCE/CLASS			
RANGE(mm)	1	2	3
≤30	±0.10	0.15	0.20
30<- ≤120	±0.15	0.20	0.30
120<- ≤300	±0.20	0.30	0.50
300<	±0.30	0.50	0.80
ANGLES	±2.5°		

EMI STOP CORP.
 EMI STOP
 EMISTOP
 SQ-15A3G
 CUS P/N

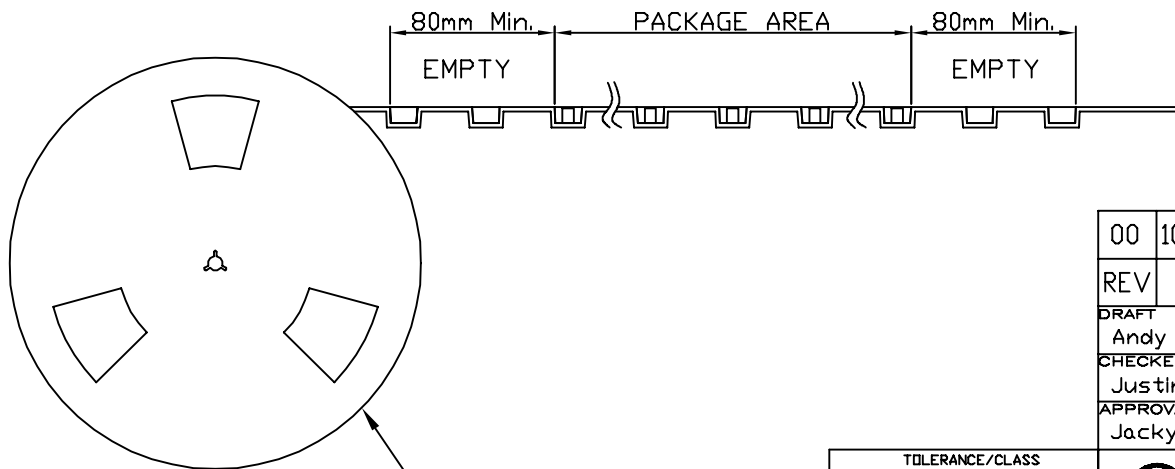


Side View

FEEDING DIRECTION



Front View



REEL(7")

Package Information:
 1.Quantity Per Reel: 2000PCS
 2.REEL: 7"X 12 mm

00	10/18-'19	Design creation		
REV	Date	Description		
DRAFT Andy □		DATE 10/18-'19	RoHS Compatible	
CHECKER Justin Wu		DATE 10/18-'19		
APPROVAL Jacky Lin		DATE 10/18-'19	SHEET 2-2	SCALE Not to scale
		UNIT mm		

TOLERANCE/CLASS			
RANGE(mm)	1	2	3
≤30	±0.10	0.15	0.20
30<- ≤120	±0.15	0.20	0.30
120<- ≤300	±0.20	0.30	0.50
300<	±0.30	0.50	0.80
ANGLES	±2.5°		

EMI STOP CORP.
 EMI STOP
 EMISTOP
 SQ-15A3G

CUS P/N