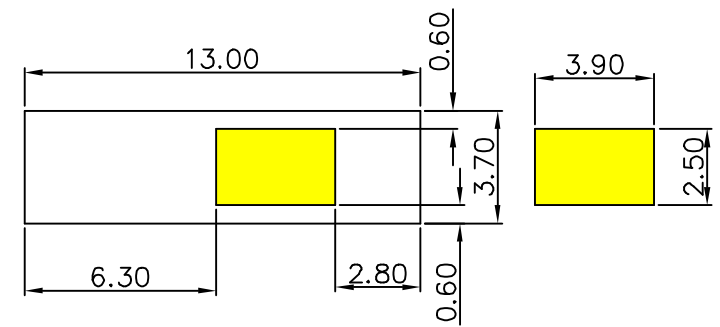
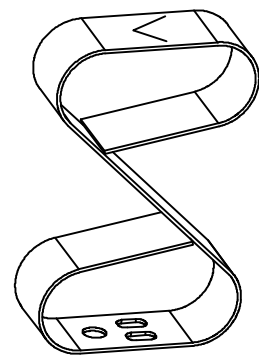
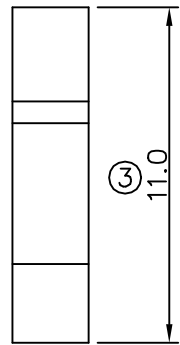
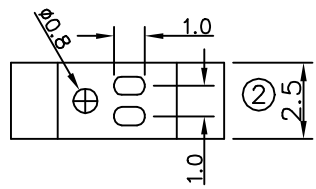
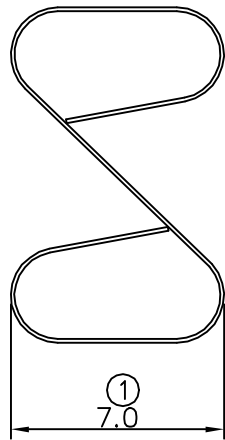
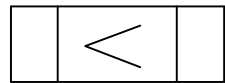
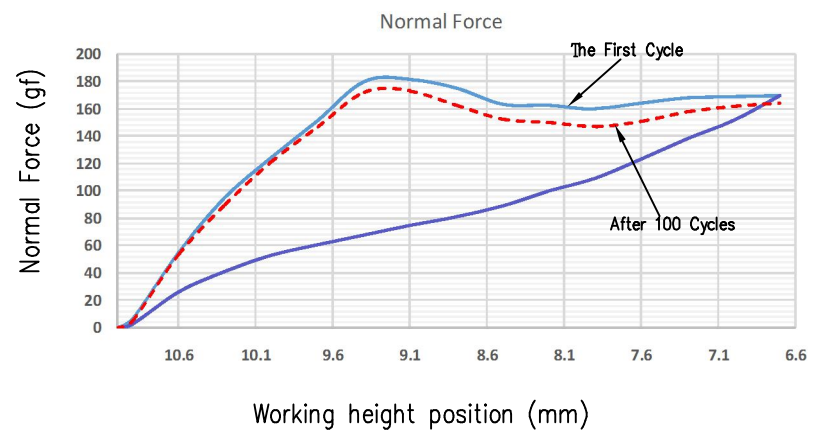


01 05/25-'11



RECOMMENDED SOLDERING PCB LAYOUT
TOLERANCE(.XX±0.05)



Note:

1. Material: Beryllium copper Thickness 0.12mm
2. Electroplate:
Gold Flash on contact area
Gold Flash on solder area
Nickel underplating over all
3. Electrical Characteristics:
3-1 Current Voltage: 12V
3-2 Current Rate: 3A
3-3 Contact Resistance: Normal Compression < 30mΩ
4. Working Height of Application: 6.70~10.50 mm
5. Spring Force Tolerance is ±30gf
6. Operating Temperature: -20℃~+85℃

00	05/20-'11	Design creation		
REV	Date	Description		
DRAFT	Gabby Weng	DATE	05/20-'11	RoHS Compatible
CHECKER	Jacky Lin	DATE	05/20-'11	
APPROVAL	Jacky Lin	DATE	05/20-'11	SHEET 1-2
		SCALE	Not to scale	UNIT mm

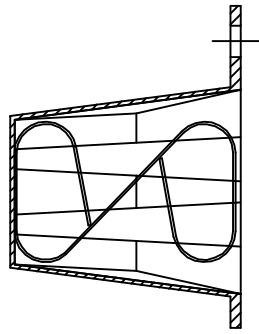
TOLERANCE/CLASS			
RANGE(mm)	1	2	3
≤30	±0.10	0.15	0.20
30< ≤120	±0.15	0.20	0.30
120< ≤300	±0.20	0.30	0.50
300<	±0.30	0.50	0.80
ANGLES	±2.5°		

EMI STOP CORP.

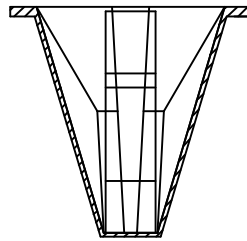
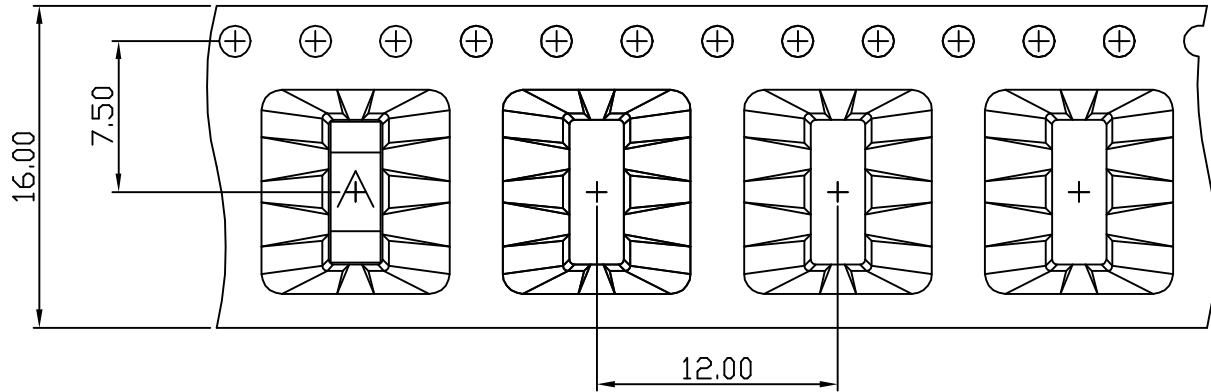
EMI STOP

EMISTOP S8-110RG

CUS P/N

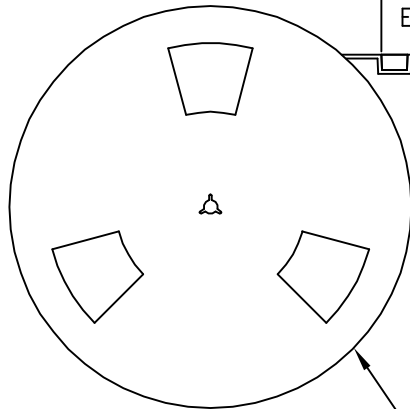
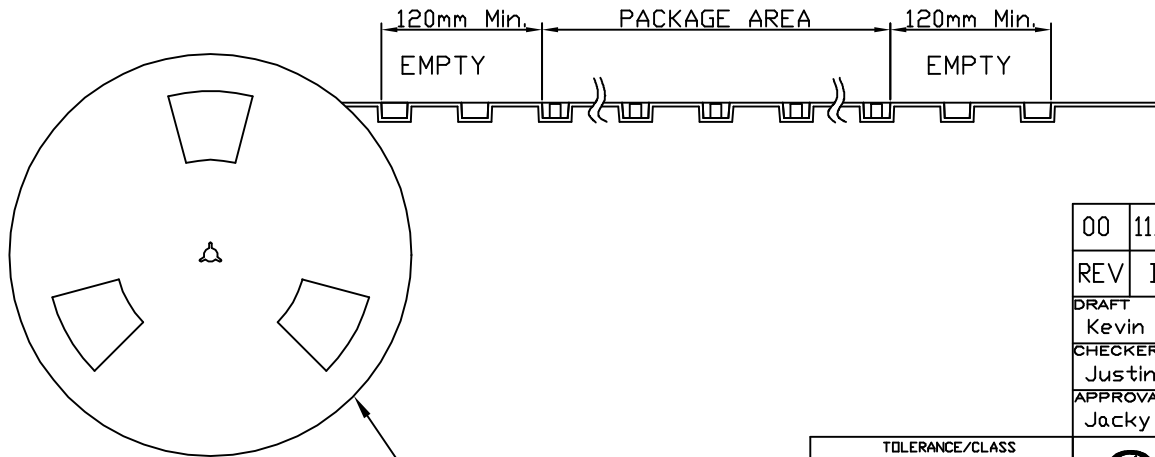


Side View



Front View

FEEDING DIRECTION



REEL(13")

Package Information:
 1.Quantity Per Reel: 500PCS
 2.REEL: 13"X 16 mm

TOLERANCE/CLASS			
RANGE(mm)	1	2	3
≤30	±0.10	0.15	0.20
30<- ≤120	±0.15	0.20	0.30
120<- ≤300	±0.20	0.30	0.50
300<	±0.30	0.50	0.80
ANGLES	±2.5°		

00	11/05-'19	Design creation			
REV	Date	Description			
DRAFT	Kevin Chen	DATE	11/05-'19	RoHS Compatible	
CHECKER	Justin Wu	DATE	11/05-'19		
APPROVAL	Jacky Lin	DATE	11/05-'19	SHEET	2-2
		SCALE	Not to scale	UNIT	mm



EMI STOP CORP.

EMI STOP

EMISTOP
S8-110RG

CUS P/N