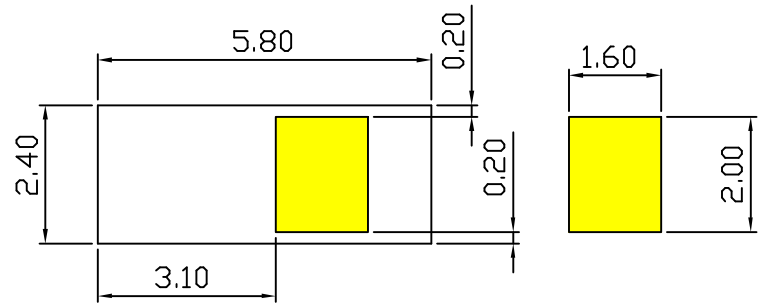
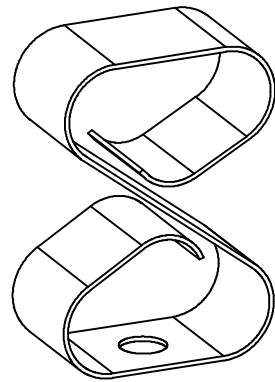
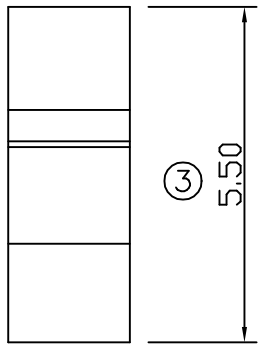
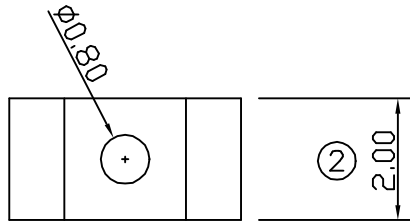
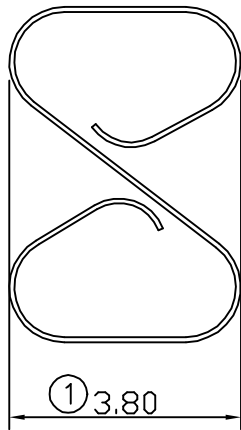
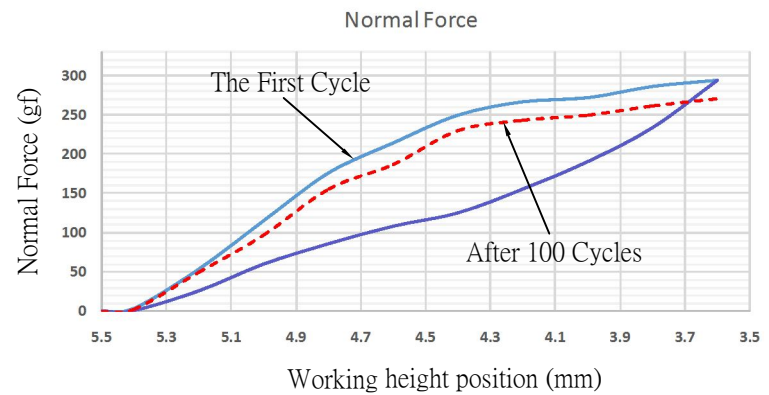


00 12/24-'13



RECOMMENDED SOLDERING PCB LAYOUT
TOLERANCE(.XX±0.05)



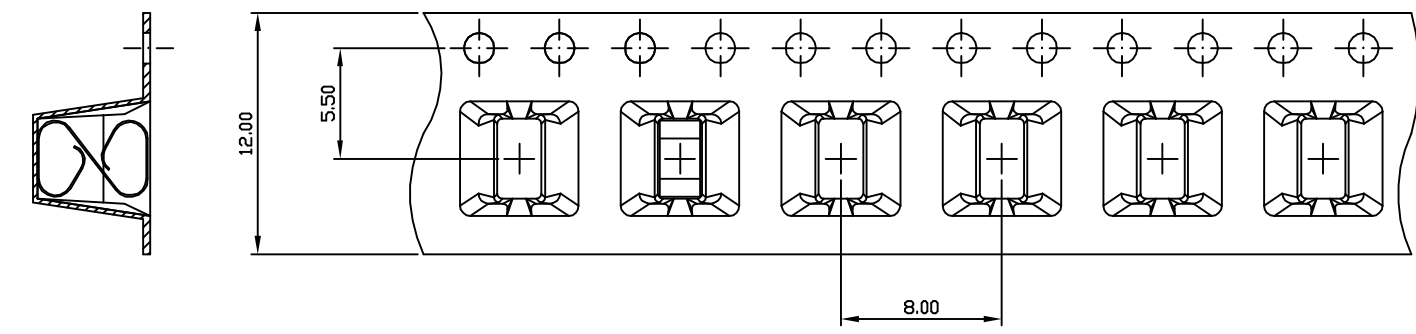
- Note:
- Material: Beryllium Copper Thickness 0.08mm
 - Electroplate:
Gold Flash on contact area
Gold Flash on solder area
Nickel underplating over all
 - Electrical Characteristics:
3-1 Current Voltage: 12V
3-2 Current Rate: 3A
3-3 Contact Resistance: Normal Compression<30mΩ
 - Working Height of Application: 3.60~5.00 mm
 - Spring Force Tolerance is ±20gf
 - Operating Temperature: -20℃~+85℃

00	09/18-'08	Design creation		
REV	Date	Description		
DRAFT	Sunyo Gi	DATE	09/18-'08	RoHS Compatible
CHECKER	Benedict Liang	DATE	09/18-'08	
APPROVAL	Jacky Lin	DATE	09/18-'08	SHEET 1-2
		SCALE	Not to scale	UNIT mm

TOLERANCE/CLASS			
RANGE(mm)	1	2	3
≤30	±0.10	0.15	0.20
30<- ≤120	±0.15	0.20	0.30
120<- ≤300	±0.20	0.30	0.50
300<	±0.30	0.50	0.80
ANGLES	±2.5°		

EMI STOP CORP.
EMI STOP
EMISTOP S8-55A2G
CUS P/N

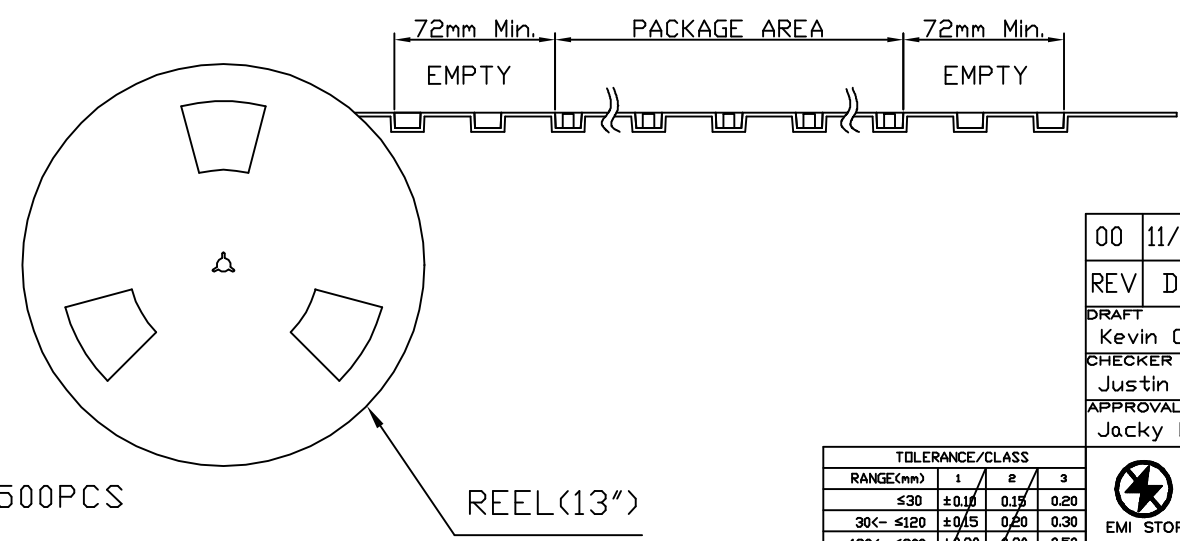
00 11/05-19'



Side View



Front View



Package Information:
 1.Quantity Per Reel: 1500PCS
 2.REEL: 13"X 12 mm

00	11/05-19'	Design creation		
REV	Date	Description		
DRAFT	Kevin Chen	DATE	11/05-19	RoHS Compatible
CHECKER	Justin Wu	DATE	11/05-19	
APPROVAL	Jacky Lin	DATE	11/05-19	SHEET 2-2
		SCALE	Not to scale	UNIT mm

TOLERANCE/CLASS			
RANGE(mm)	1	2	3
≤30	±0.10	0.15	0.20
30<- ≤120	±0.15	0.20	0.30
120<- ≤300	±0.20	0.30	0.50
300<	±0.30	0.50	0.80
ANGLES	±2.5°		

EMI STOP CORP.
 EMI STOP
 EMISTOP S8-55A2G
 CUS P/N