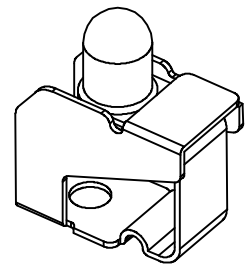
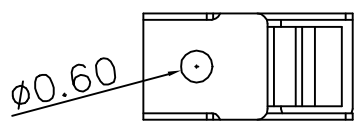
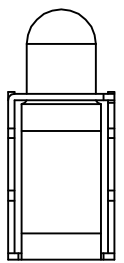
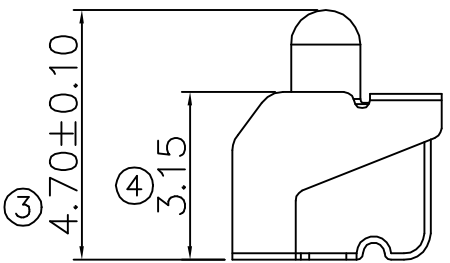
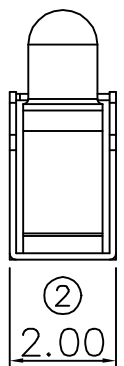
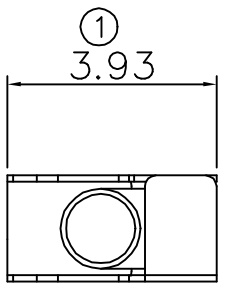
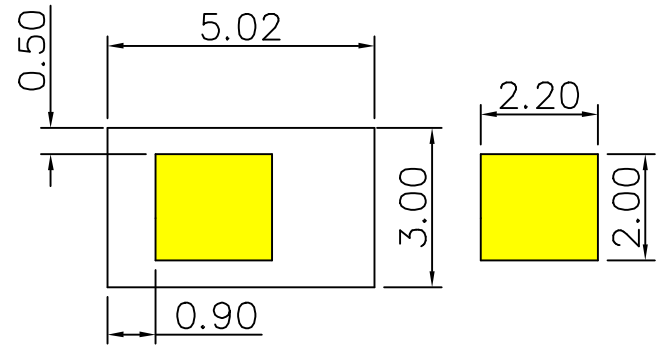


0011/13-'15

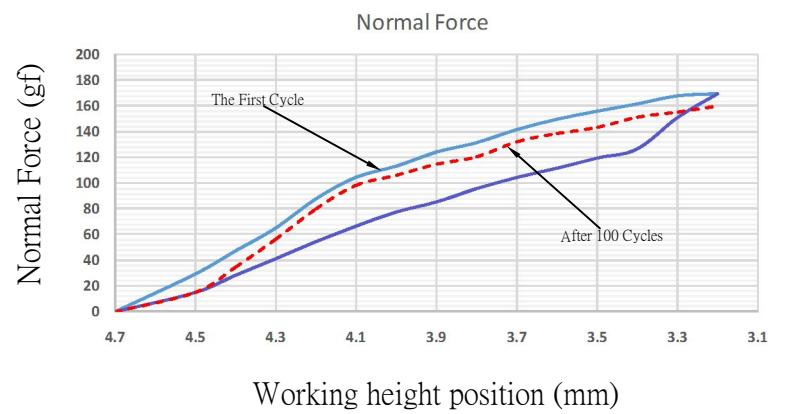


- Note:
- Material: Beryllium Copper Thickness 0.12mm
 - Electroplate:
Gold Flash on contact area
Gold Flash on solder area
Nickel underplating over all
 - Electrical Characteristics:
3-1 Current Voltage: 12V
3-2 Current Rate: 3A
3-3 Contact Resistance: Normal Compression < 30mΩ
 - Working Height of Application: 3.20~4.30 mm
 - Spring Force Tolerance is ±20gf
 - Operating Temperature: -20℃~+85℃



RECOMMENDED SOLDERING PCB LAYOUT

TOLERANCE(.XX±0.05)



00	11/13-'15	Design creation								
REV	Date	Description								
DRAFT	Roy Li	DATE	11/13-'15	RoHS Compatible						
CHECKER	Justin Wu	DATE	11/13-'15							
APPROVAL	Jacky Lin	DATE	11/13-'15			SHEET	1-2	SCALE	Not to scale	UNIT

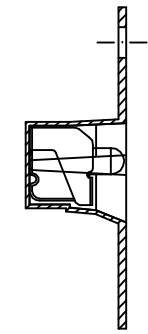
TOLERANCE/CLASS			
RANGE(mm)	1	2	3
≤30	±0.10	0.15	0.20
30< ≤120	±0.15	0.20	0.30
120< ≤300	±0.20	0.30	0.50
300<	±0.30	0.50	0.80
ANGLES	±2.5°		

EMI STOP CORP.
EMI STOP
EMISTOP
QQ-47A2G

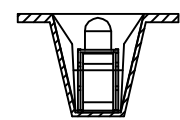
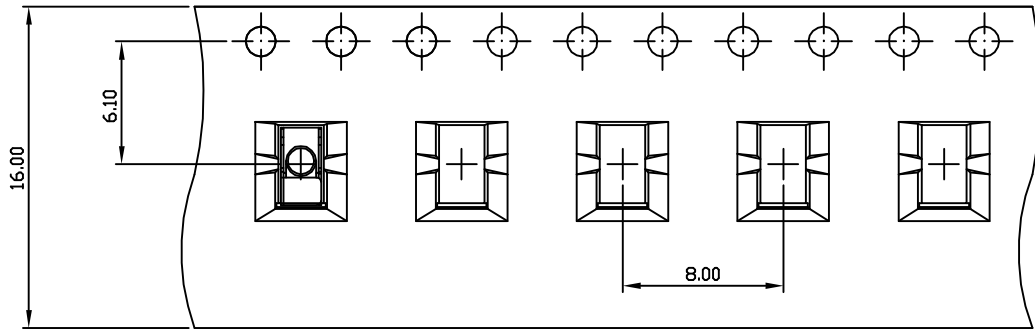
CUS P/N

A
B
C
D
E
F

A
B
C
D
E
F

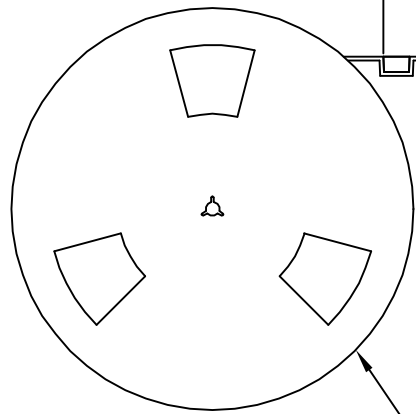
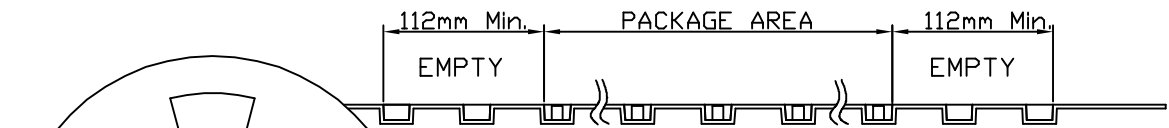


Side View



Front View

FEEDING DIRECTION



REEL(13")

Package Information:
1.Quantity Per Reel: 1700PCS
2.REEL: 13"X 16 mm

00	10/09-'19	Design creation			
REV	Date	Description			
DRAFT	Kevin Chen	DATE	10/09-'19	RoHS Compatible	
CHECKER	Justin Wu	DATE	10/09-'19		
APPROVAL	Jacky Lin	DATE	10/09-'19		
		SHEET	2-2	SCALE	Not to scale
		UNIT	mm		

TOLERANCE/CLASS			
RANGE(mm)	1	2	3
≤30	±0.10	0.15	0.20
30<- ≤120	±0.15	0.20	0.30
120<- ≤300	±0.20	0.30	0.50
300<	±0.30	0.50	0.80
ANGLES	±2.5°		

EMI STOP CORP.
 EMI STOP
 EMISTOP
 QQ-47A2G

CUS P/N