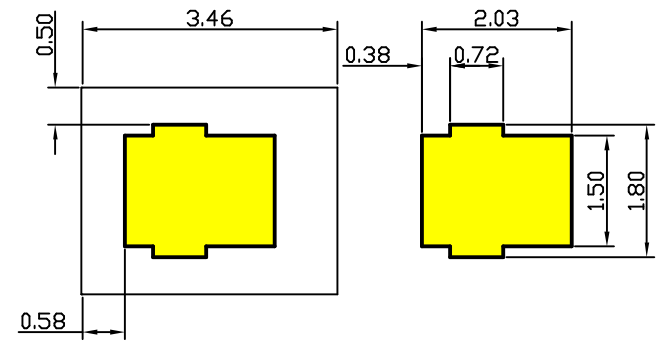
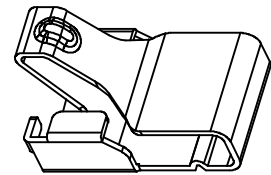
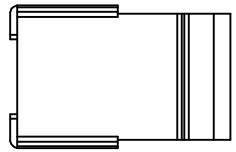
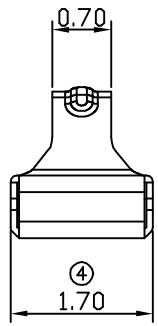
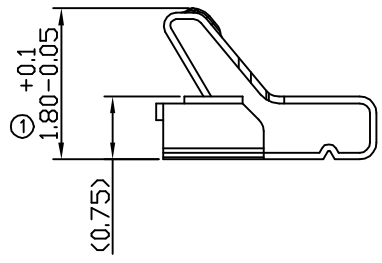
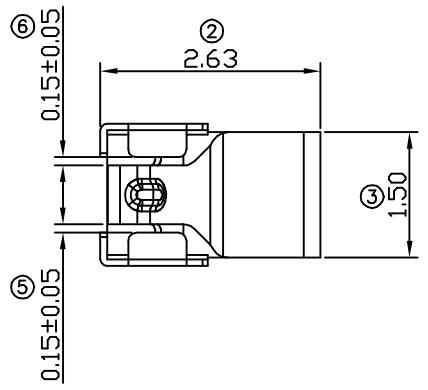
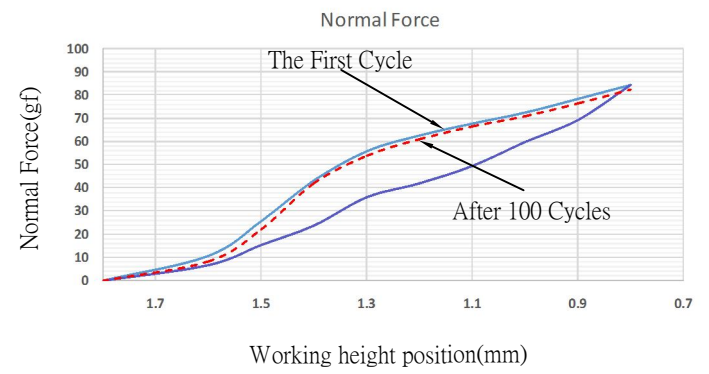


00 09/04-'15



RECOMMENDED SOLDERING PCB LAYOUT
TOLERANCE(.XX±0.05)



- Note:
1. Material: Copper Alloy Thickness 0.08mm
 2. Electroplate:
 - Gold Flash on contact area
 - Gold Flash on solder area
 - Nickel underplating over all
 3. Electrical Characteristics:
 - 3-1 Current Voltage: 12V
 - 3-2 Current Rate: 3A
 - 3-3 Contact Resistance: Normal Compression < 30mΩ
 4. Working Height of Application: 0.80 ~ 1.40mm
 5. Spring Force Tolerance is ±20gf
 6. Operating Temperature: -20℃~+85℃

00	07/01-'15	Design creation		
REV	Date	Description		
DRAFT	Hardy Hsieh	DATE	07/01-'15	RoHS Compatible
CHECKER	Justin Wu	DATE	07/01-'15	
APPROVAL	Jacky Lin	DATE	07/01-'15	SHEET 1-2
		SCALE	Not to scale	UNIT mm

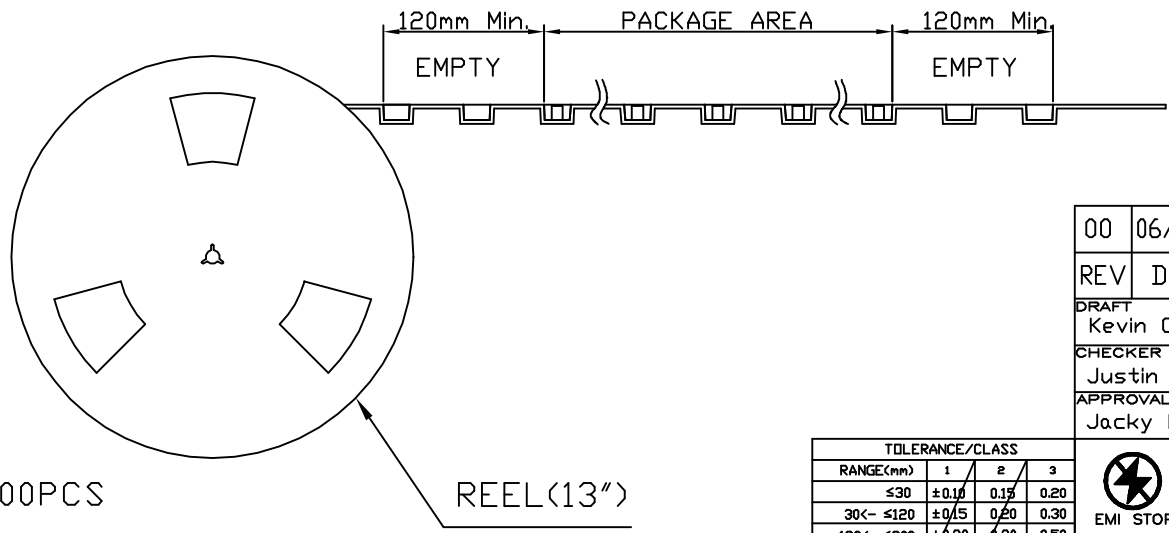
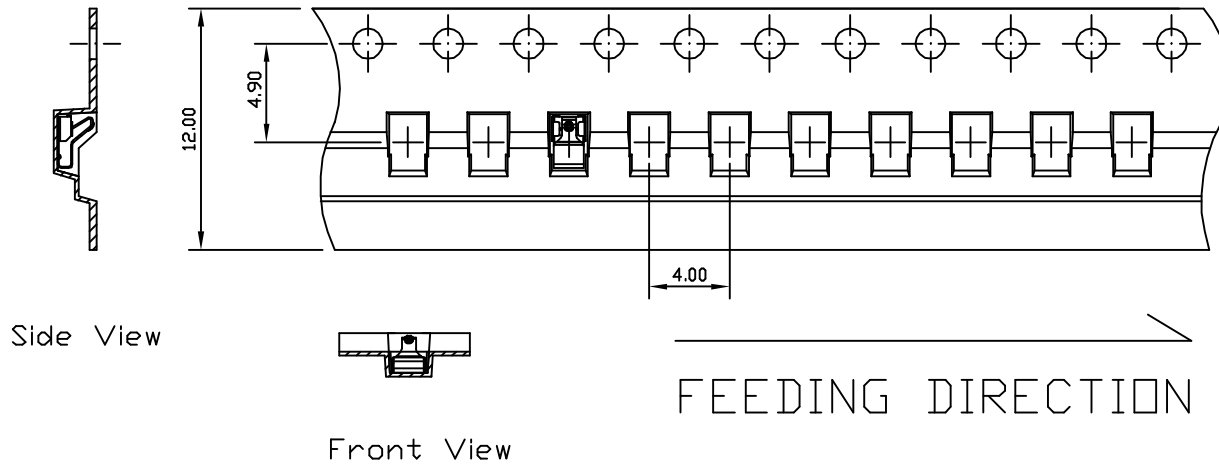
TOLERANCE/CLASS			
RANGE(mm)	1	2	3
≤30	±0.10	0.15	0.20
30<- ≤120	±0.15	0.20	0.30
120<- ≤300	±0.20	0.30	0.50
300<	±0.30	0.50	0.80
ANGLES	±2.5°		

EMI STOP CORP.

EMI STOP

EMISTOP QM-18A6Q2G

CUS P/N



Package Information:
 1.Quantity Per Reel: 8100PCS
 2.REEL: 13"X 12 mm

TOLERANCE/CLASS			
RANGE(mm)	1	2	3
≤30	±0.10	0.15	0.20
30<- ≤120	±0.15	0.20	0.30
120<- ≤300	±0.20	0.30	0.50
300<	±0.30	0.50	0.80
ANGLES	±2.5°		

00	06/21-'19	Design creation		
REV	Date	Description		
DRAFT	Kevin Chen	DATE	06/21-'19	RoHS Compatible
CHECKER	Justin Wu	DATE	06/21-'19	
APPROVAL	Jacky Lin	DATE	06/21-'19	SHEET 2-2
		SCALE	Not to scale	UNIT mm

EMI STOP CORP.
 EMI STOP
 EMISTOP QM-18A6Q2G

CUS P/N