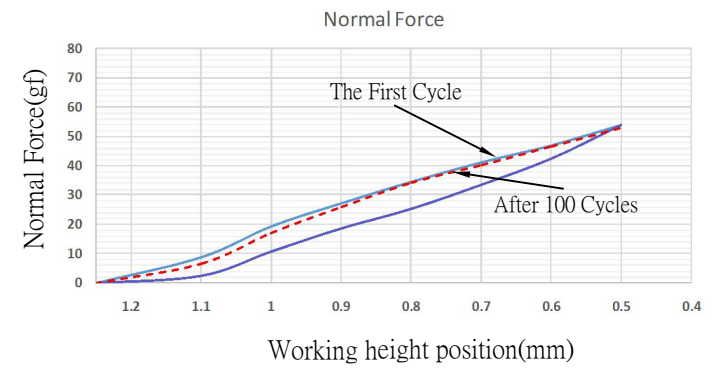
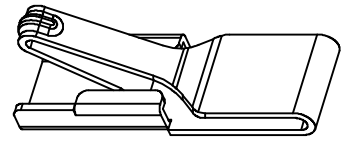


RECOMMENDED SOLDERING PCB LAYOUT
 TOLERANCE(.XX±0.05)



- Note:
1. Material: Copper Alloy Thickness 0.10mm
 2. Electroplate:
 - Au > 1u" on contact area
 - Au > 1u" on solder area
 - Nickel underplating over all
 3. Electrical Characteristics:
 - 3-1 Current Voltage: 12V
 - 3-2 Current Rate: 3A
 - 3-3 Contact Resistance: Normal Compression $\lt;30m\Omega$
 4. Working Height of Application: 0.50 ~ 0.95mm
 5. Spring Force Tolerance is $\pm 20gf$
 6. Operating Temperature: $-20^{\circ}C \sim +85^{\circ}C$



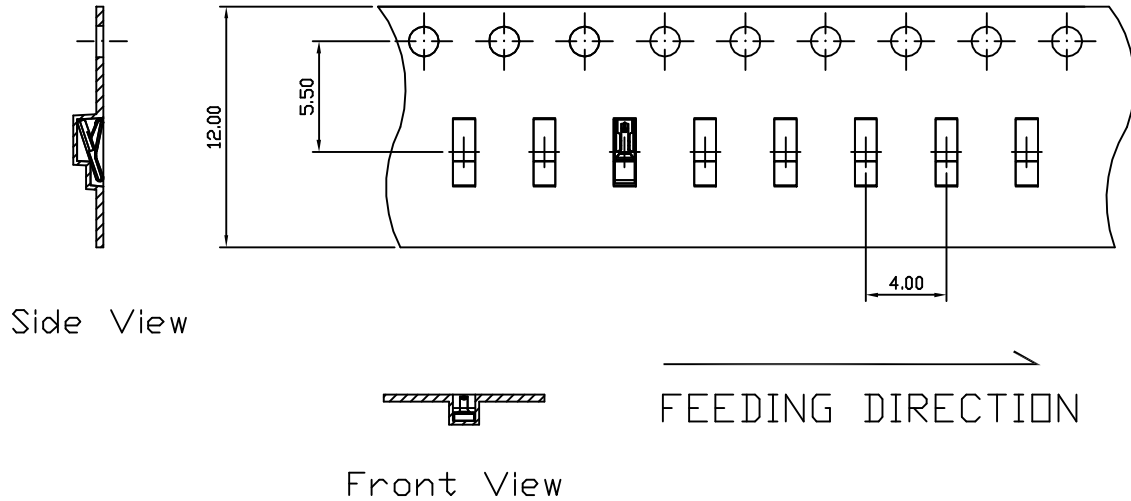
00	04/09-'14	Design creation			
REV	Date	Description			
DRAFT	Hardy Hsieh	DATE	04/09-'14	RoHS Compatible	
CHECKER	Gabby Weng	DATE	04/09-'14		
APPROVAL	Jacky Lin	DATE	04/09-'14		
		SHEET	1-2	SCALE	Not to scale
		UNIT	mm		

TOLERANCE/CLASS			
RANGE(mm)	1	2	3
≤30	±0.10	0.15	0.20
30<- ≤120	±0.15	0.20	0.30
120<- ≤300	±0.20	0.30	0.50
300<	±0.30	0.50	0.80
ANGLES	±2.5°		

EMI STOP CORP.

EMI STOP

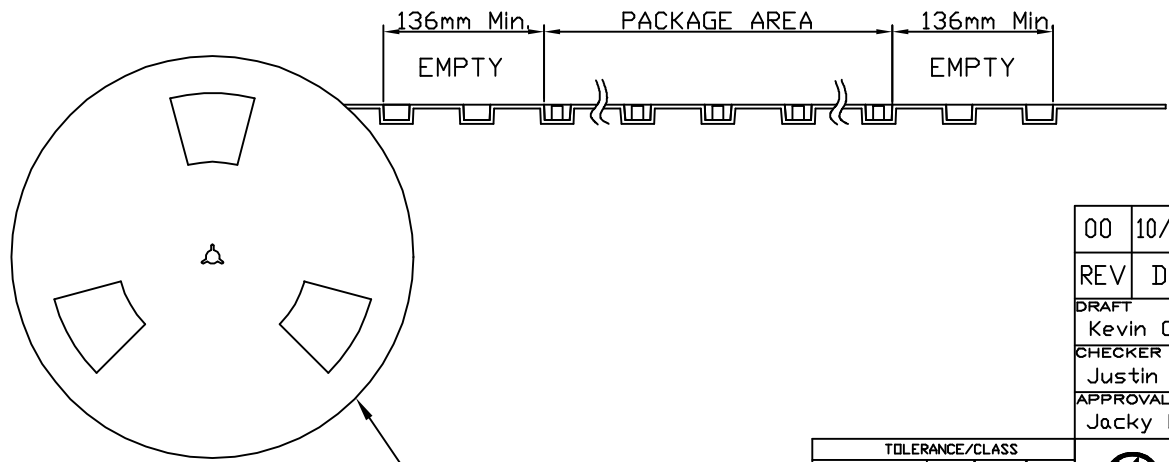
EMISTOP QM-12A1G	CUS P/N
---------------------	---------



Side View

Front View

FEEDING DIRECTION




REEL(13")

Package Information:
 1.Quantity Per Reel: 9700PCS
 2.REEL: 13"X 12 mm

00	10/09-'19	Design creation			
REV	Date	Description			
DRAFT	Kevin Chen	DATE	10/09-'19	RoHS Compatible	
CHECKER	Justin Wu	DATE	10/09-'19		
APPROVAL	Jacky Lin	DATE	10/09-'19	SHEET	2-2
		SCALE	Not to scale	UNIT	mm

TOLERANCE/CLASS			
RANGE(mm)	1	2	3
≤30	±0.10	0.15	0.20
30<- ≤120	±0.15	0.20	0.30
120<- ≤300	±0.20	0.30	0.50
300<	±0.30	0.50	0.80
ANGLES	±2.5°		


EMI STOP CORP.
 EMI STOP
 EMISTOP QM-12A1G

CUS P/N