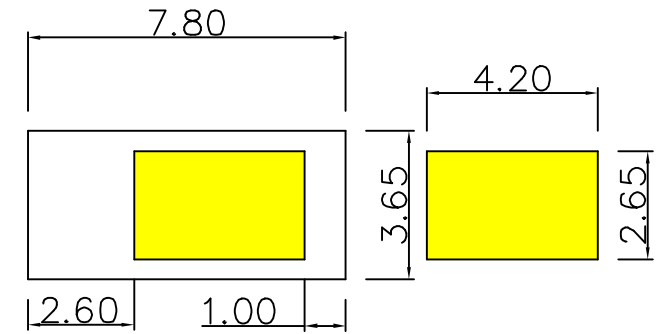
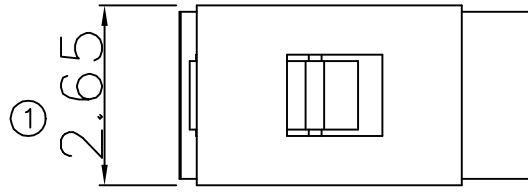
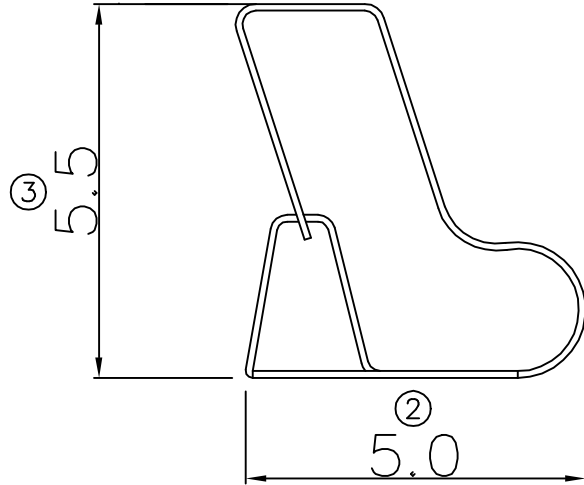
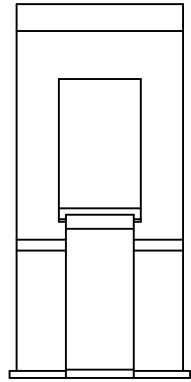
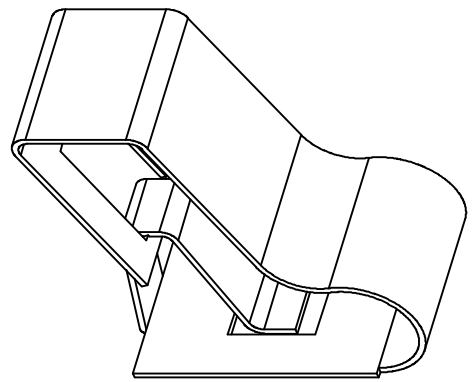
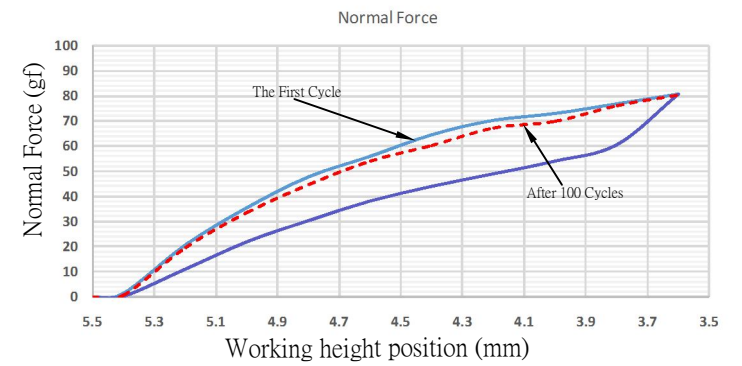


00 09/16-'13



RECOMMENDED SOLDERING PCB LAYOUT

TOLERANCE(.XX±0.05)



Note:

1. Material: Beryllium Copper Thickness 0.10mm
2. Electroplate:
 Gold Flash on contact area
 Gold Flash on solder area
 Nickel underplating over all
3. Electrical Characteristics:
 3-1 Current Voltage: 12V
 3-2 Current Rate: 3A
 3-3 Contact Resistance: Normal Compression < 30mΩ
4. Working Height of Application: 3.6 ~ 4.4mm
5. Spring Force Tolerance is ±20gf
6. Operating Temperature: -20℃ ~ +85℃

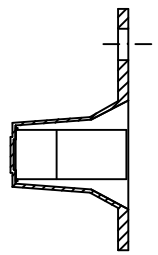
00	07/10-'06	Design creation						
REV	Date	Description						
DRAFT	Dick Chang	DATE	07/10-'06	RoHS Compatible				
CHECKER	Jacky Lin	DATE	07/10-'06					
APPROVAL	Gary Chen	DATE	07/10-'06					
		SHEET	1-2	SCALE	Not to scale	UNIT	mm	

TOLERANCE/CLASS			
RANGE(mm)	1	2	3
≤30	±0.10	0.15	0.20
30< ≤120	±0.15	0.20	0.30
120< ≤300	±0.20	0.30	0.50
300<	±0.30	0.50	0.80
ANGLES	±2.5°		

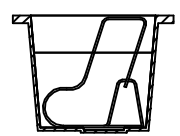
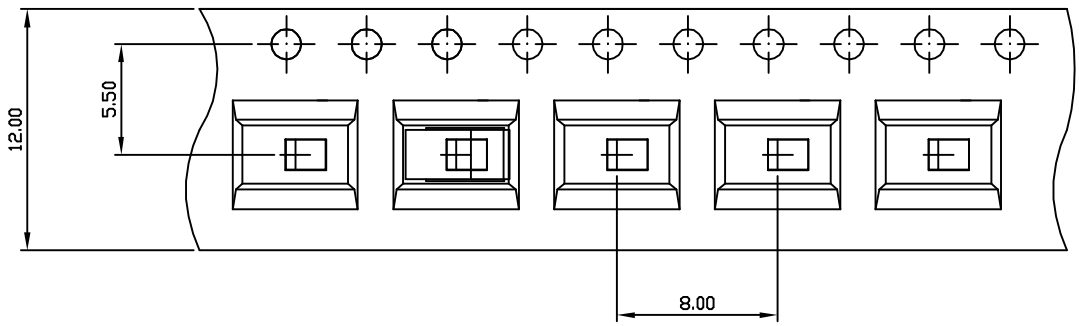
EMI STOP CORP.

EMISTOP SQ-55G CUS P/N

00 10/30-'19

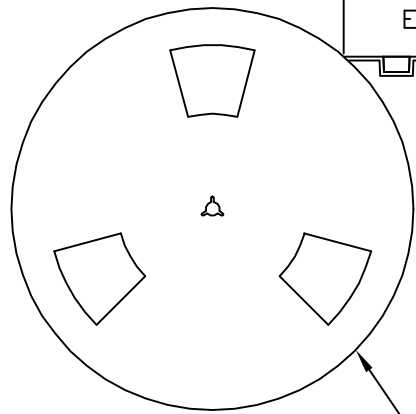
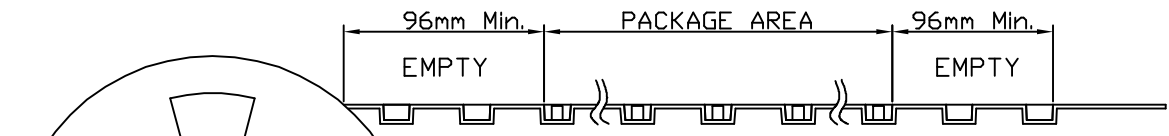


Side View



Front View

FEEDING DIRECTION



REEL(13")

Package Information:
 1.Quantity Per Reel: 1500PCS
 2.REEL: 13"X 12 mm

00	10/30-'19	Design creation			
REV	Date	Description			
DRAFT	Kevin Chen	DATE	10/30-'19	RoHS Compatible	
CHECKER	Justin Wu	DATE	10/30-'19		
APPROVAL	Jacky Lin	DATE	10/30-'19	SHEET	2-2
		SCALE	Not to scale	UNIT	mm

TOLERANCE/CLASS			
RANGE(mm)	1	2	3
≤30	±0.10	0.15	0.20
30<- ≤120	±0.15	0.20	0.30
120<- ≤300	±0.20	0.30	0.50
300<	±0.30	0.50	0.80
ANGLES	±2.5°		

EMI STOP CORP.
 EMI STOP
 EMISTOP SQ-55G

CUS P/N