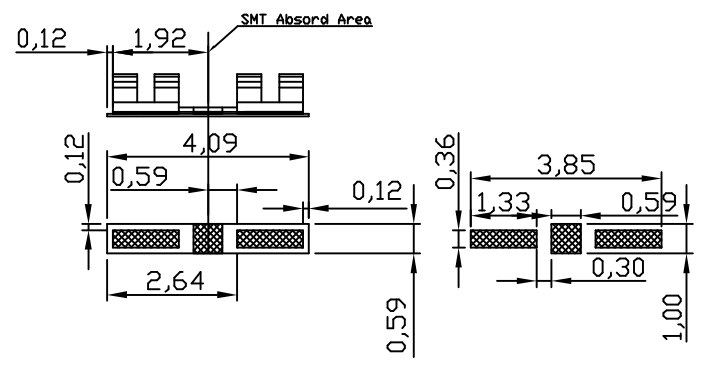
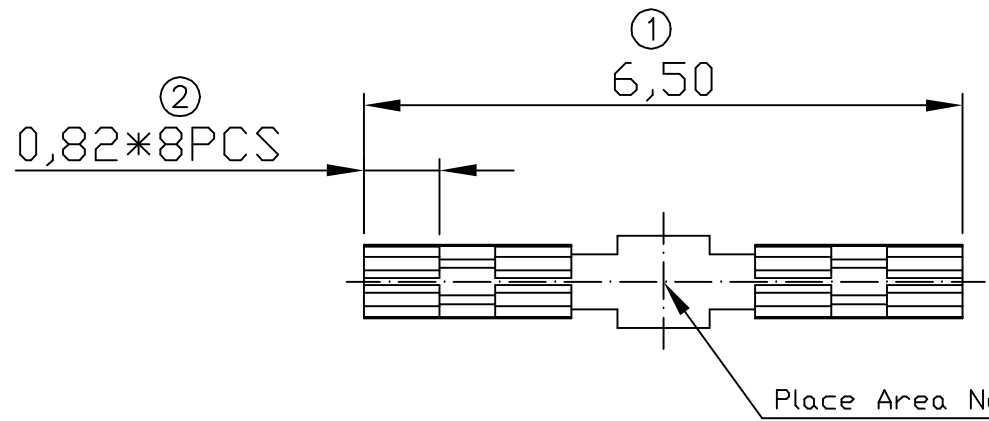
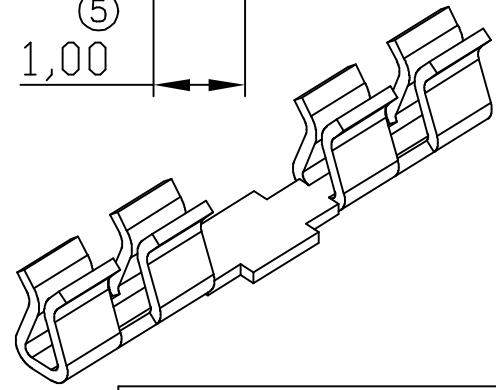
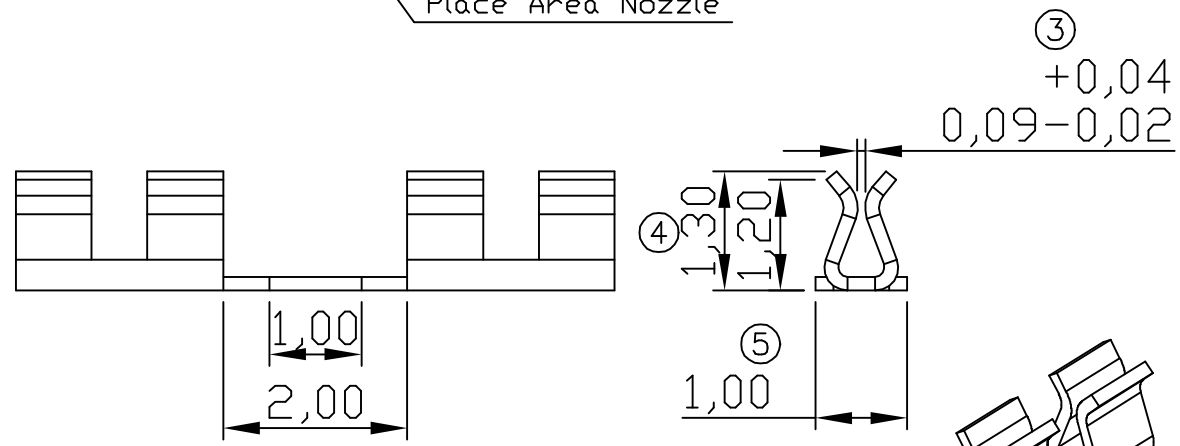


03 09/05-'12



RECOMMENDED SOLDERING PCB LAYOUT
TOLERANCE(.XX±0.05)



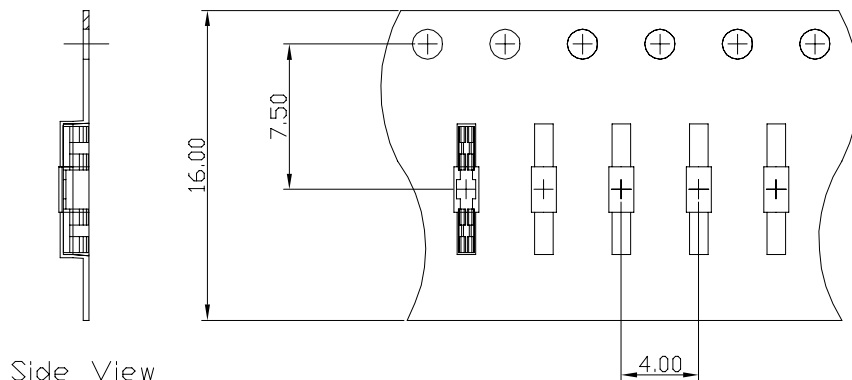
Note:

1. Material: Stainless steel Thickness 0.15mm
2. Electroplate:
Matte Sn over all
Nickel underplating over all
3. Operating Temperature: -20℃~+85℃
4. Recommended conditions shielding cover 0.15mm

00	05/18-'11	Design creation			
REV	Date	Description			
DRAFT	Gobby Weng	DATE	02/21-'11	RoHS Compatible	
CHECKER	Jacky Lin	DATE	05/18-'11		
APPROVAL	Jacky Lin	DATE	02/21-'11		
		SHEET	1-2	SCALE	Not to scale
		UNIT	mm		
		EMI STOP CORP.			
EMISTOP SUL-12A2M		CUS P/N			

TOLERANCE/CLASS			
RANGE(mm)	1	2	3
≤30	±0.10	0.15	0.20
30<- ≤120	±0.15	0.20	0.30
120<- ≤300	±0.20	0.30	0.50
300<	±0.30	0.50	0.80
ANGLES	±2.5°		

00 10/31-'19

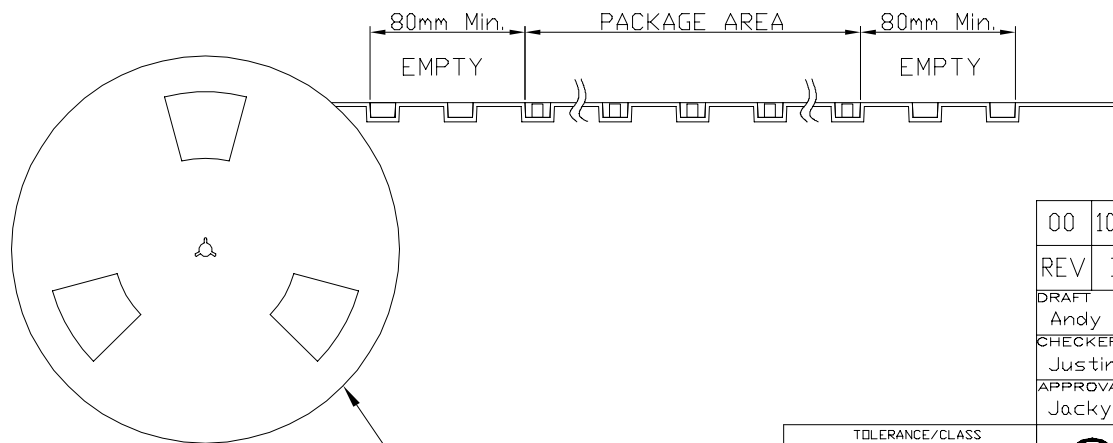


Side View

FEEDING DIRECTION



Front View



REEL (13")

Package Information:
 1.Quantity Per Reel: 8000PCS
 2.REEL: 13"X 16 mm

00	10/31-'19	Design creation		
REV	Date	Description		
DRAFT	Andy □	DATE	10/31-'19	RoHS Compatible
CHECKER	Justin Wu	DATE	10/31-'19	
APPROVAL	Jacky Lin	DATE	10/31-'19	SHEET 2-2
		SCALE	Not to scale	UNIT mm

TOLERANCE/CLASS			
RANGE(mm)	1	2	3
≤30	±0.10	0.15	0.20
30<- ≤120	±0.15	0.20	0.30
120<- ≤300	±0.20	0.30	0.50
300<	±0.30	0.50	0.80
ANGLES	±2.5°		



EMI STOP CORP.

EMI STOP

EMISTOP
SUL-12A2M

CUS P/N