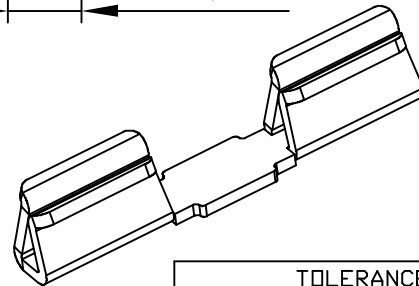
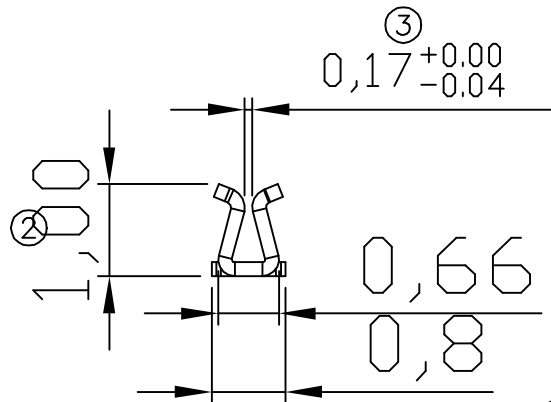
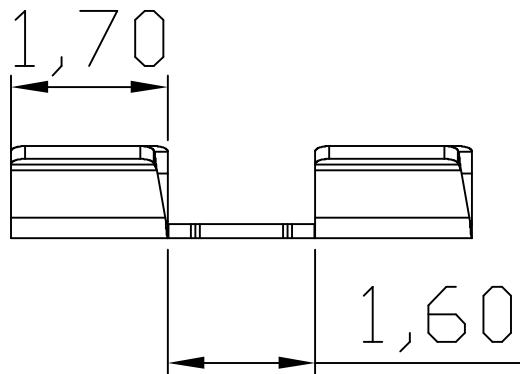
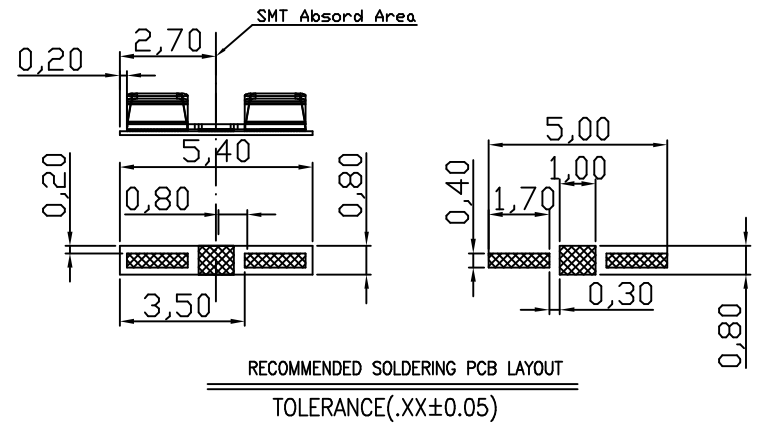
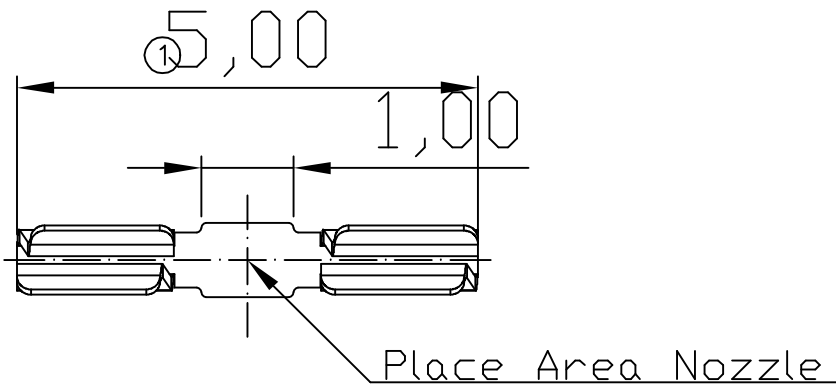


01 05/07-'13



Note:

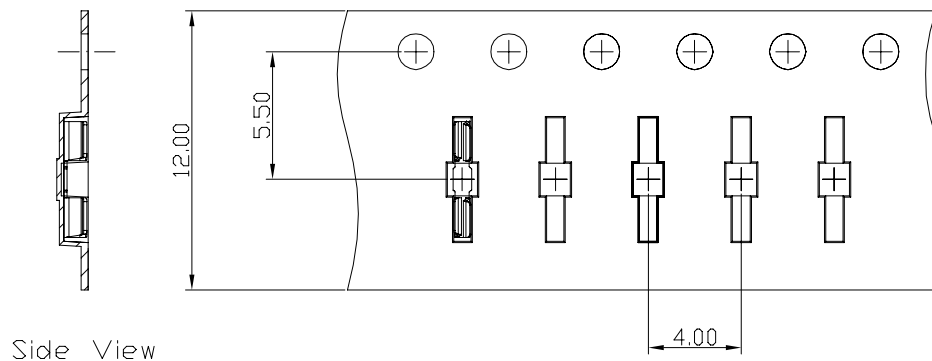
1. Material: Stainless steel Thickness 0.15mm
2. Electroplate:
Matte Sn over all
Nickel underplating over all
3. Operating Temperature: -20℃~+85℃
4. Recommended conditions shielding cover 0.20mm

01	05/07-'13	球標③增加負公差 0.04
00	10/29-'12	Design creation
REV	Date	Description
DRAFT	Gabby Wang	DATE 10/29-'12
CHECKER	Jacky Lin	DATE 10/29-'12
APPROVAL	Jacky Lin	DATE 10/29-'12
SHEET	1-2	SCALE Not to scale
UNIT	mm	RoHS Compatible

TOLERANCE/CLASS			
RANGE(mm)	1	2	3
≤30	±0.10	0.15	0.20
30<- ≤120	±0.15	0.20	0.30
120<- ≤300	±0.20	0.30	0.50
300<	±0.30	0.50	0.80
ANGLES	±2.5°		

EMI STOP CORP.
EMI STOP
EMISTOP SUL-1020A1M
CUS P/N

00 11/04-'19

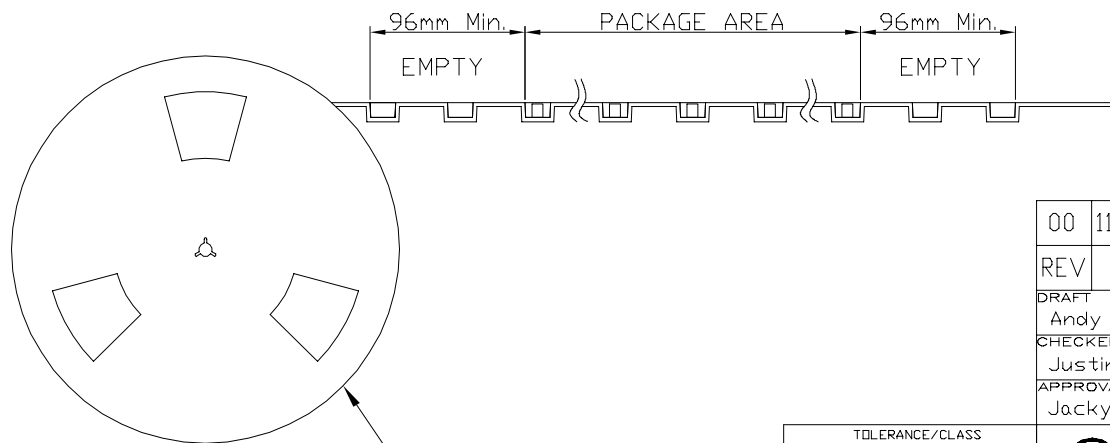


Side View

FEEDING DIRECTION



Front View



REEL(7")

Package Information:
 1.Quantity Per Reel: 3000PCS
 2.REEL: 7"X 12 mm

TOLERANCE/CLASS			
RANGE(mm)	1	2	3
≤30	±0.10	0.15	0.20
30<- ≤120	±0.15	0.20	0.30
120<- ≤300	±0.20	0.30	0.50
300<	A 0.30	0.50	0.80
ANGLES	±2.5°		

00	11/04-'19	Design creation		
REV	Date	Description		
DRAFT	Andy □	DATE	11/04-'19	RoHS Compatible
CHECKER	Justin Wu	DATE	11/04-'19	
APPROVAL	Jacky Lin	DATE	11/04-'19	SHEET
				2-2
		SCALE	Not to scale	UNIT
			mm	



EMI STOP CORP.

EMI STOP

EMISTOP
SUL-1020A1M

CUS P/N