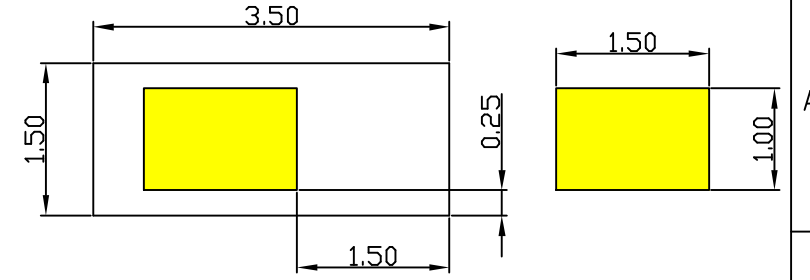
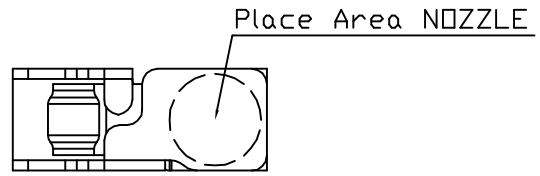
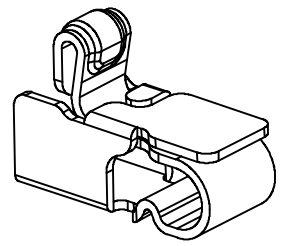
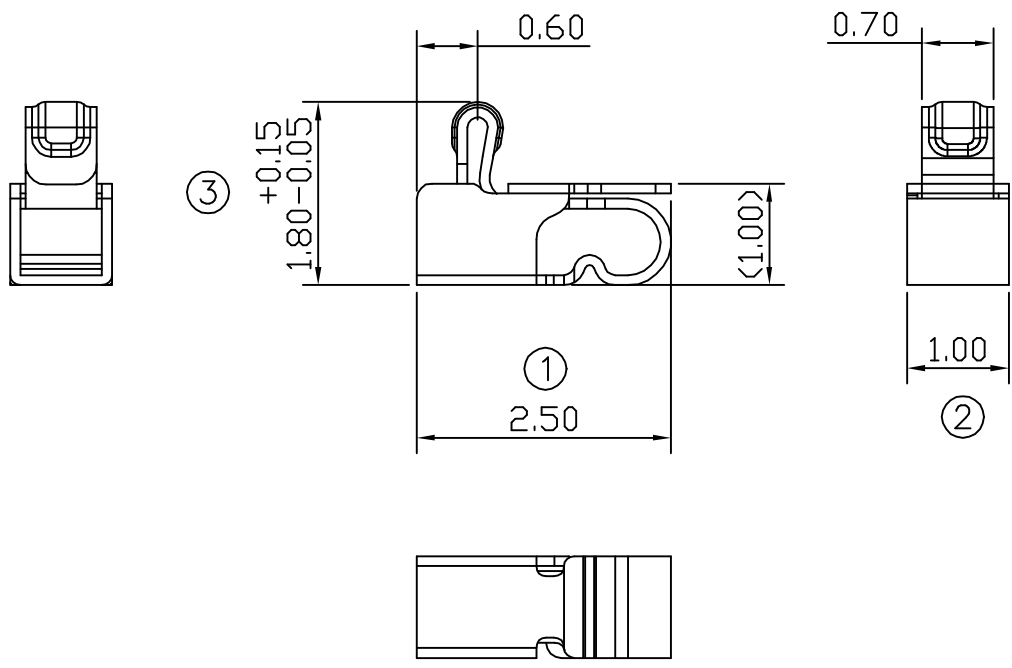
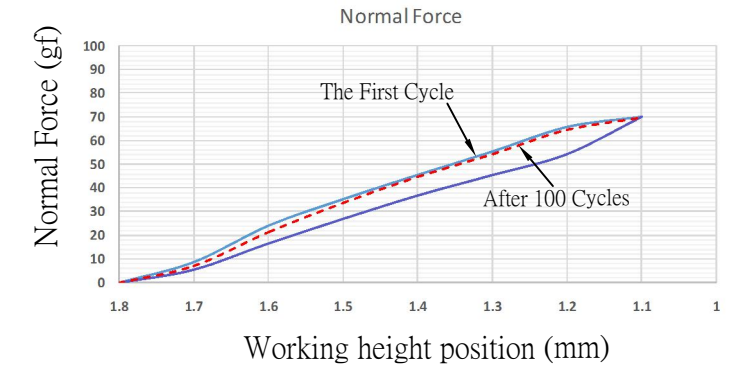


02 09/07-'15



RECOMMENDED SOLDERING PCB LAYOUT
TOLERANCE(.XX±0.05)

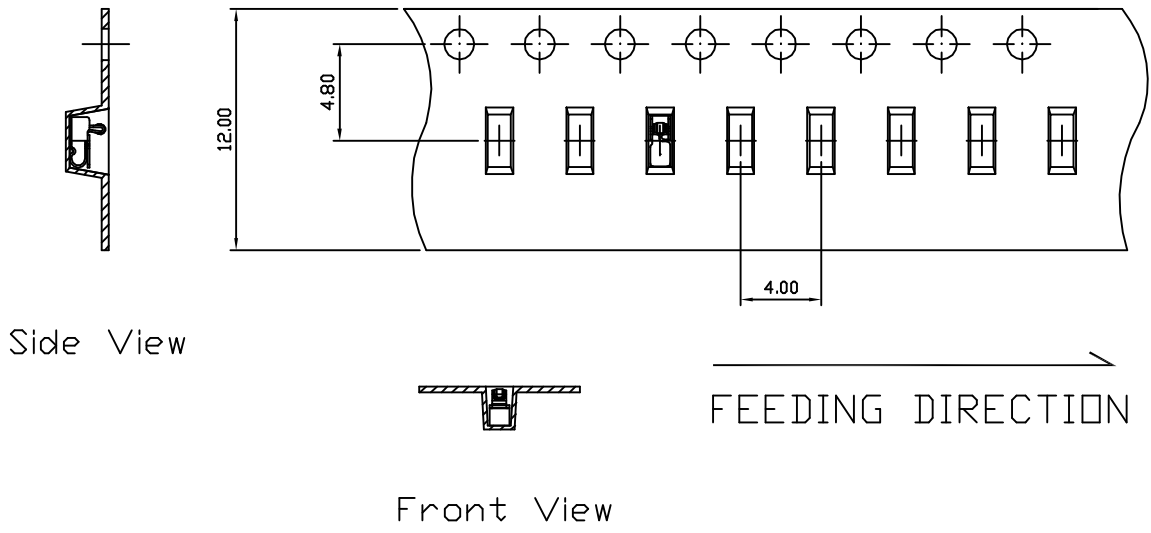


- Note:
1. Material: Titanium copper Thickness 0.10mm
 2. Electroplate:
Gold Flash on contact area
Gold Flash on solder area
Nickel underplating over all
 3. Electrical Characteristics:
3-1 Current Voltage: 12V
3-2 Current Rate: 3A
3-3 Contact Resistance: Normal Compression < 30mΩ
 4. Working Height of Application: 1.10~1.40 mm
 5. Spring Force Tolerance is ±20gf
 6. Operating Temperature: -20℃~+85℃

| | | |
|----------|------------|--------------------|
| 01 | 09/07-'15 | DESIGN_IMPROVEMENT |
| 00 | 12/12-'13 | Design creation |
| REV | Date | Description |
| DRAFT | Duke Chen | DATE 12/12-'13 |
| CHECKER | Gabby Weng | DATE 12/12-'13 |
| APPROVAL | Jacky Lin | DATE 12/12-'13 |
| SHEET | 1-2 | SCALE Not to scale |
| UNIT | mm | RoHS Compatible |

| TOLERANCE/CLASS | | | |
|-----------------|-------|------|------|
| RANGE(mm) | 1 | 2 | 3 |
| ≤30 | ±0.10 | 0.15 | 0.20 |
| 30<- ≤120 | ±0.15 | 0.20 | 0.30 |
| 120<- ≤300 | ±0.20 | 0.30 | 0.50 |
| 300< | ±0.30 | 0.50 | 0.80 |
| ANGLES | ±2.5° | | |

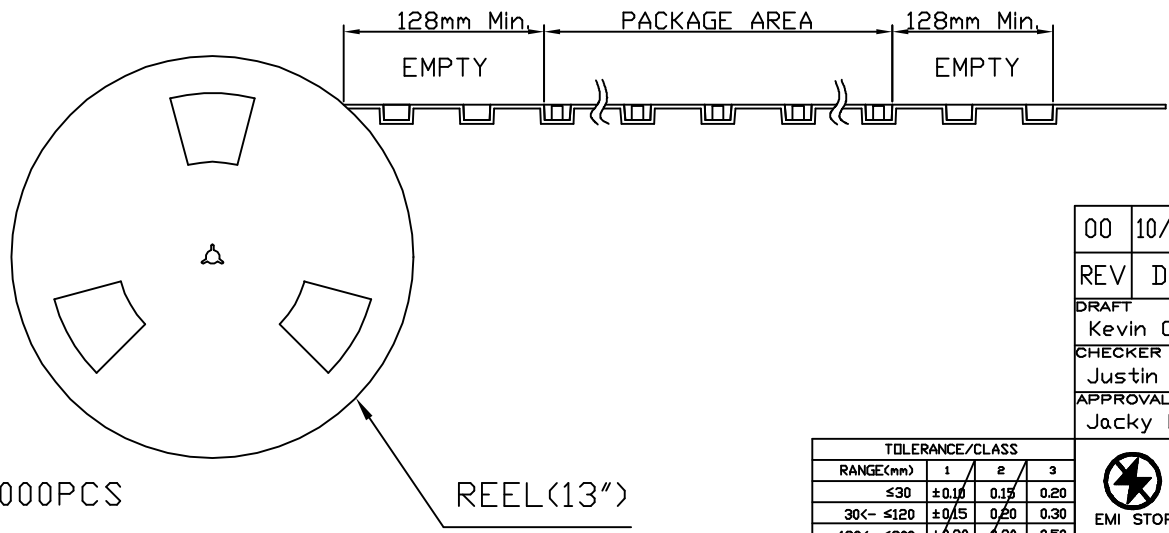
EMI STOP CORP.
EMI STOP
EMISTOP QTT-18G
CUS P/N



Side View

Front View


FEEDING DIRECTION



Package Information:
 1.Quantity Per Reel: 8000PCS
 2.REEL: 13"X 12 mm

| | | | | |
|----------|------------|-----------------|--------------|----------------------------|
| 00 | 10/14-'19 | Design creation | | |
| REV | Date | Description | | |
| DRAFT | Kevin Chen | DATE | 10/14-'19 | RoHS Compatible |
| CHECKER | Justin Wu | DATE | 10/14-'19 | |
| APPROVAL | Jacky Lin | DATE | 10/14-'19 | SHEET 2-2 |
| | | SCALE | Not to scale | UNIT mm |

| TOLERANCE/CLASS | | | |
|-----------------|-------|------|------|
| RANGE(mm) | 1 | 2 | 3 |
| ≤30 | ±0.10 | 0.15 | 0.20 |
| 30<- ≤120 | ±0.15 | 0.20 | 0.30 |
| 120<- ≤300 | ±0.20 | 0.30 | 0.50 |
| 300< | ±0.30 | 0.50 | 0.80 |
| ANGLES | ±2.5° | | |


EMI STOP CORP.
 EMI STOP
 EMISTOP QTT-18G

CUS P/N