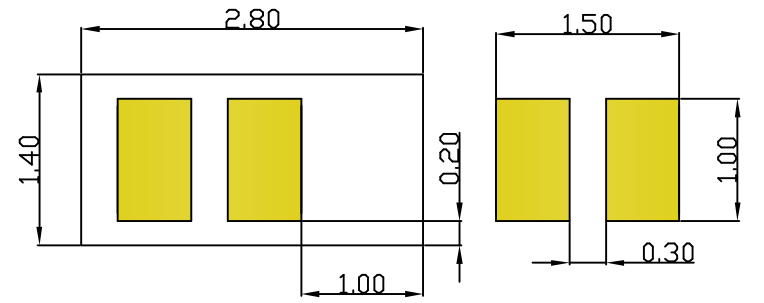
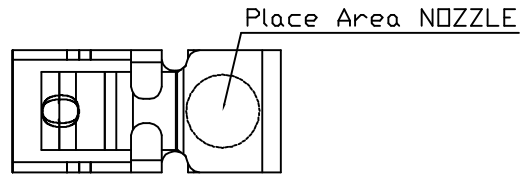


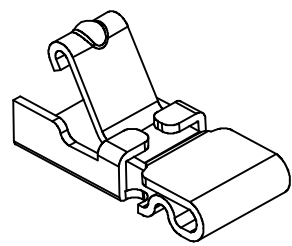
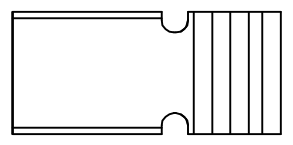
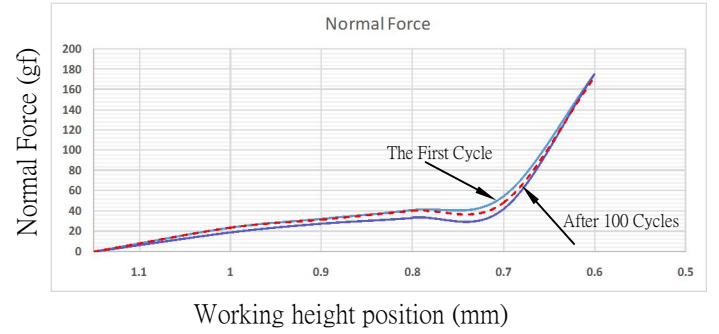
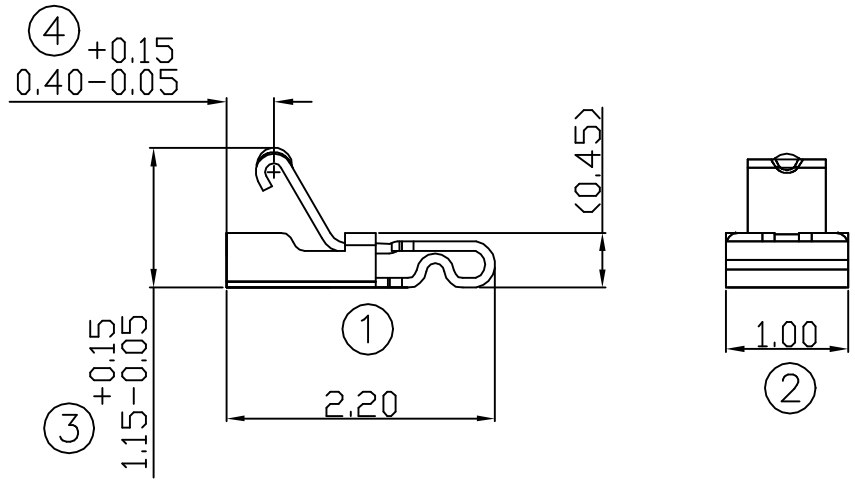
00 03/01-'17

A
B
C
D
E
F



RECOMMENDED SOLDERING PCB LAYOUT

TOLERANCE(.XX±0.05)



Note:

1. Material: Titanium copper Thickness 0.08mm
2. Electroplate:
Gold Flash on contact area
Gold Flash on solder area
Nickel underplating over all
3. Electrical Characteristics:
3-1 Current Voltage: 12V
3-2 Current Rate: 3A
3-3 Contact Resistance: Normal Compression <math><30\text{m}\Omega</math>
4. Working Height of Application: 0.55~0.75 mm
5. Spring Force Tolerance is $\pm 20\text{gf}$
6. Operating Temperature: $-20^\circ\text{C}\sim+85^\circ\text{C}$

00	03/01-'17	Design creation			
REV	Date	Description			
DRAFT	Hardy Hsieh	DATE	03/01-'17	RoHS Compatible	
CHECKER	Justin Wu	DATE	03/01-'17		
APPROVAL	Jacky Lin	DATE	03/01-'17		
		SHEET	1-2	SCALE	Not to scale
		UNIT	mm		

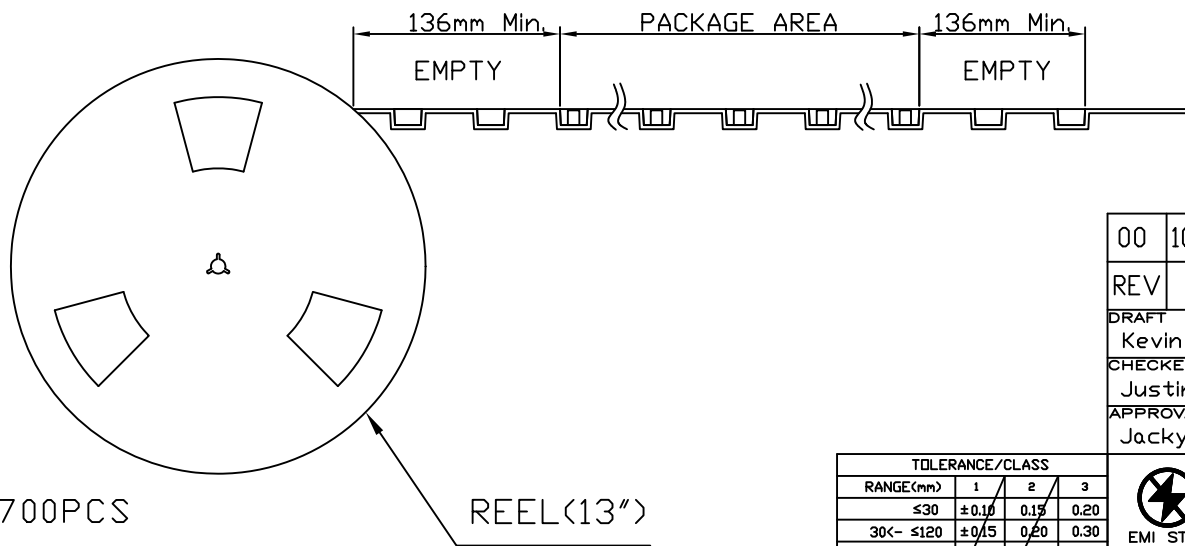
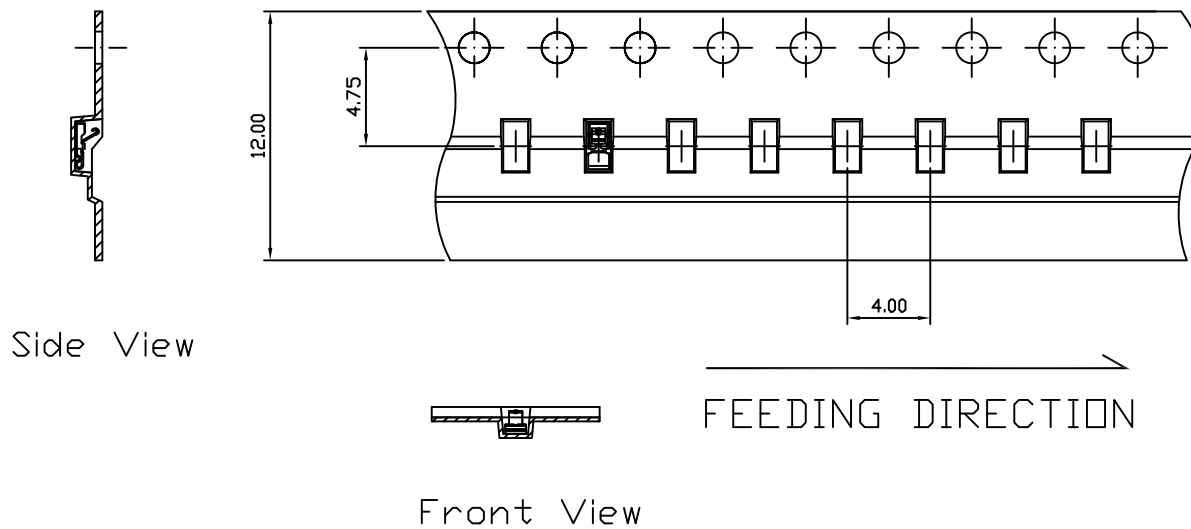
TOLERANCE/CLASS			
RANGE(mm)	1	2	3
≤30	±0.10	0.15	0.20
30<- ≤120	±0.15	0.20	0.30
120<- ≤300	±0.20	0.30	0.50
300<	±0.30	0.50	0.80
ANGLES	±2.5°		

EMI STOP CORP.

EMISTOP
QTT-10A2G

CUS P/N

1 2 3 4 5 6 7 8



Package Information:
 1.Quantity Per Reel: 9700PCS
 2.REEL: 13"X 12 mm

00	10/15-'19	Design creation		
REV	Date	Description		
DRAFT	DATE	RoHS Compatible		
Kevin Chen	10/15-'19			
CHECKER	DATE			
Justin Wu	10/15-'19			
APPROVAL	DATE	SHEET	SCALE	UNIT
Jacky Lin	10/15-'19	2-2	Not to scale	mm

TOLERANCE/CLASS			
RANGE(mm)	1	2	3
≤30	±0.10	0.15	0.20
30<- ≤120	±0.15	0.20	0.30
120<- ≤300	±0.20	0.30	0.50
300<	±0.30	0.50	0.80
ANGLES	±2.5°		

EMI STOP CORP.

EMI STOP

EMISTOP QTT-10A2G	CUS P/N
----------------------	---------